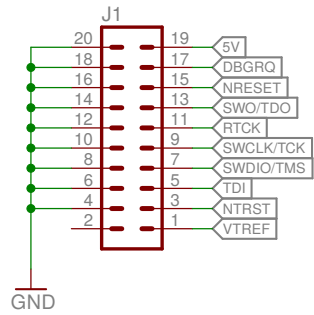
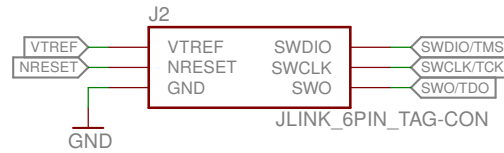




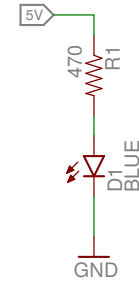
### 20-Pin Ribbon Cable from JLink



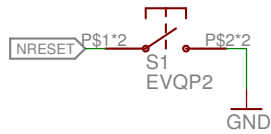
### 6 Pin Pogo Connector



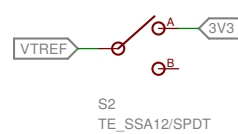
### Power LED



### Manual Reset

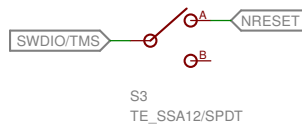


### Voltage Ref Select

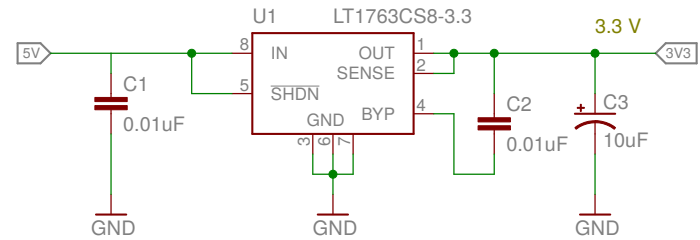


### Jumper SWDIO & RESET

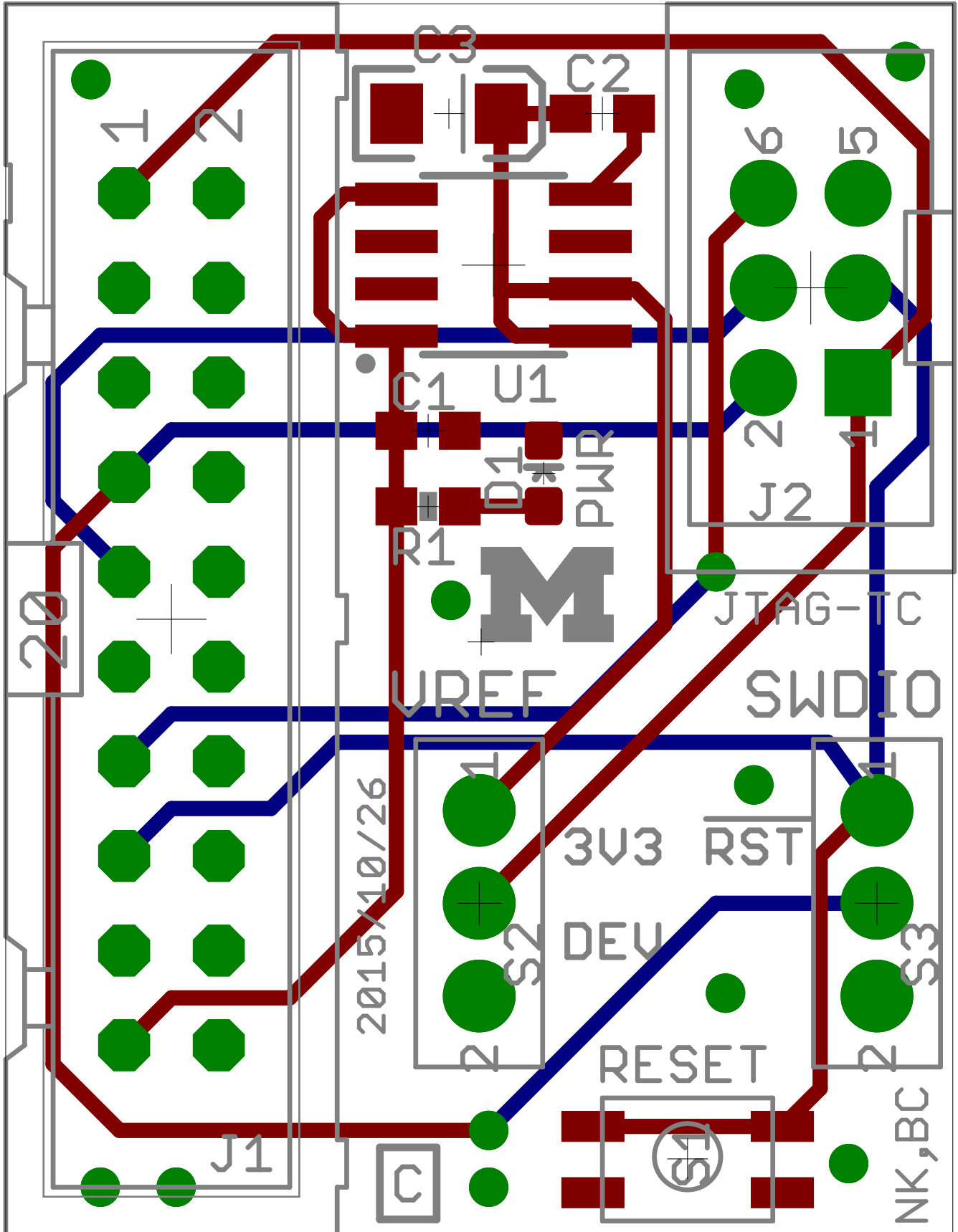
Useful for the nRF51822, which uses the SWDIO line for RESET.

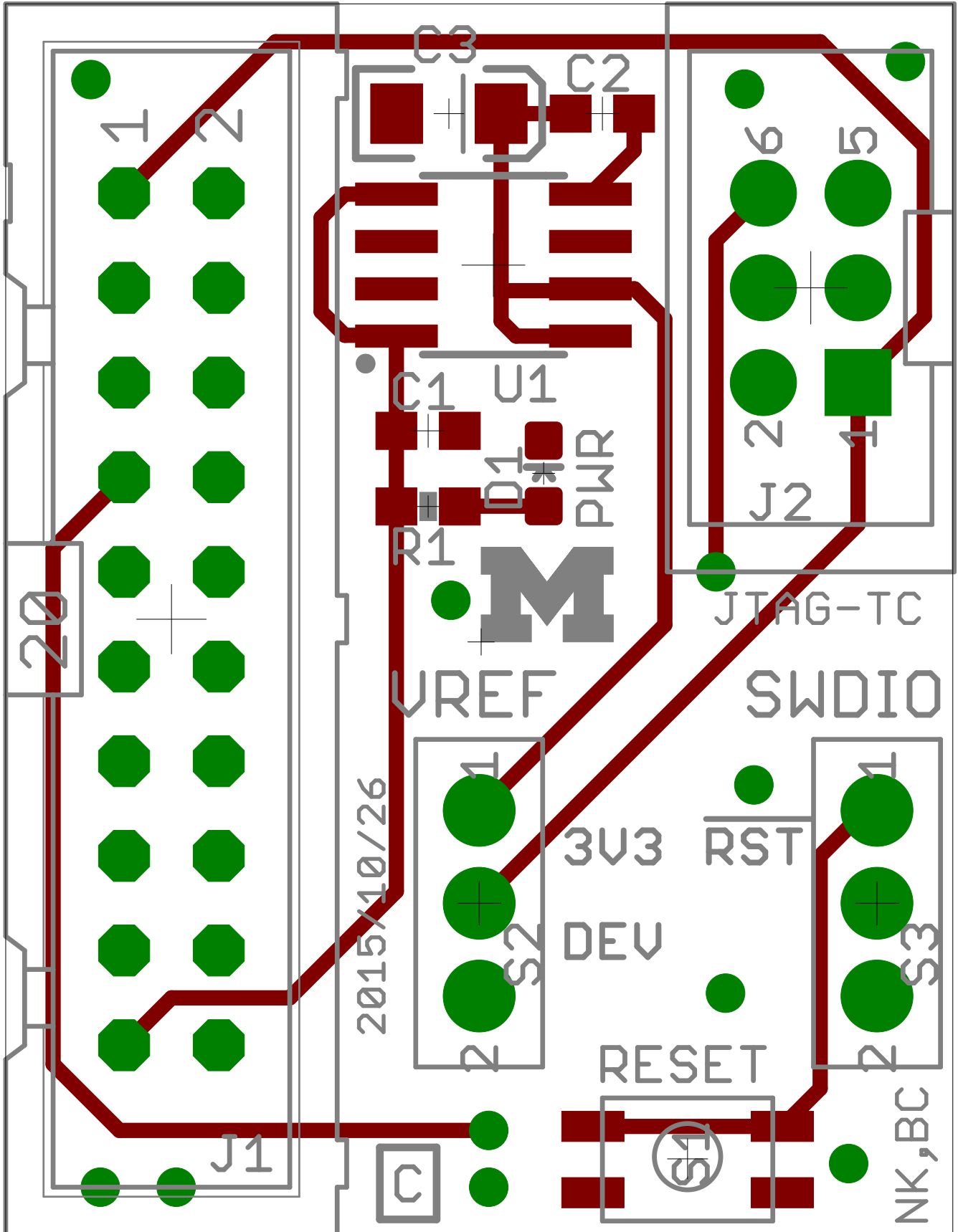


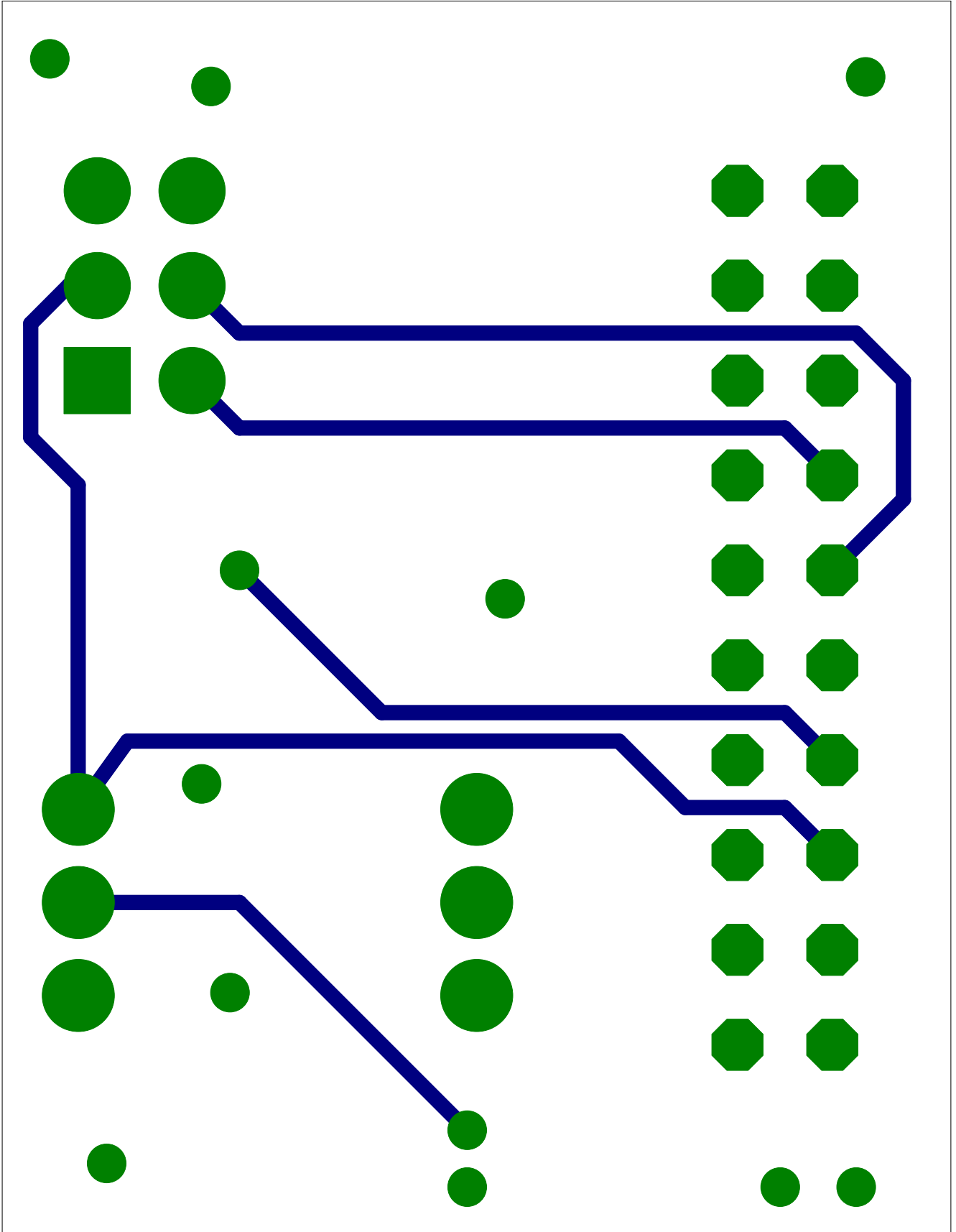
### 3V3 Regulator



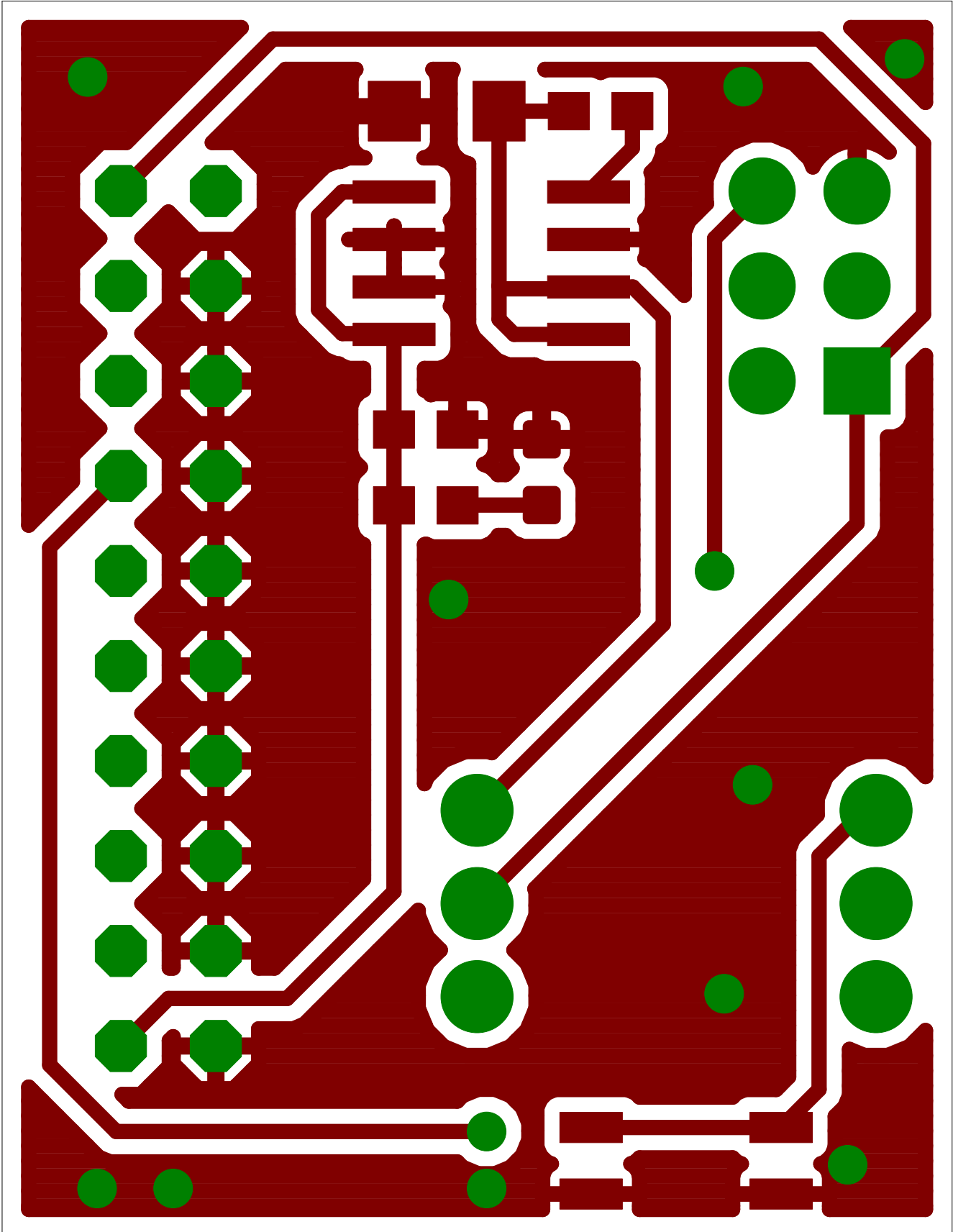
<b>M</b>	JLink to Tag Connect		REV: C
	Author: Noah Klugman / Brad Campbell		
	Date: 10/24/15 1:12 AM	Sheet: 1/1	



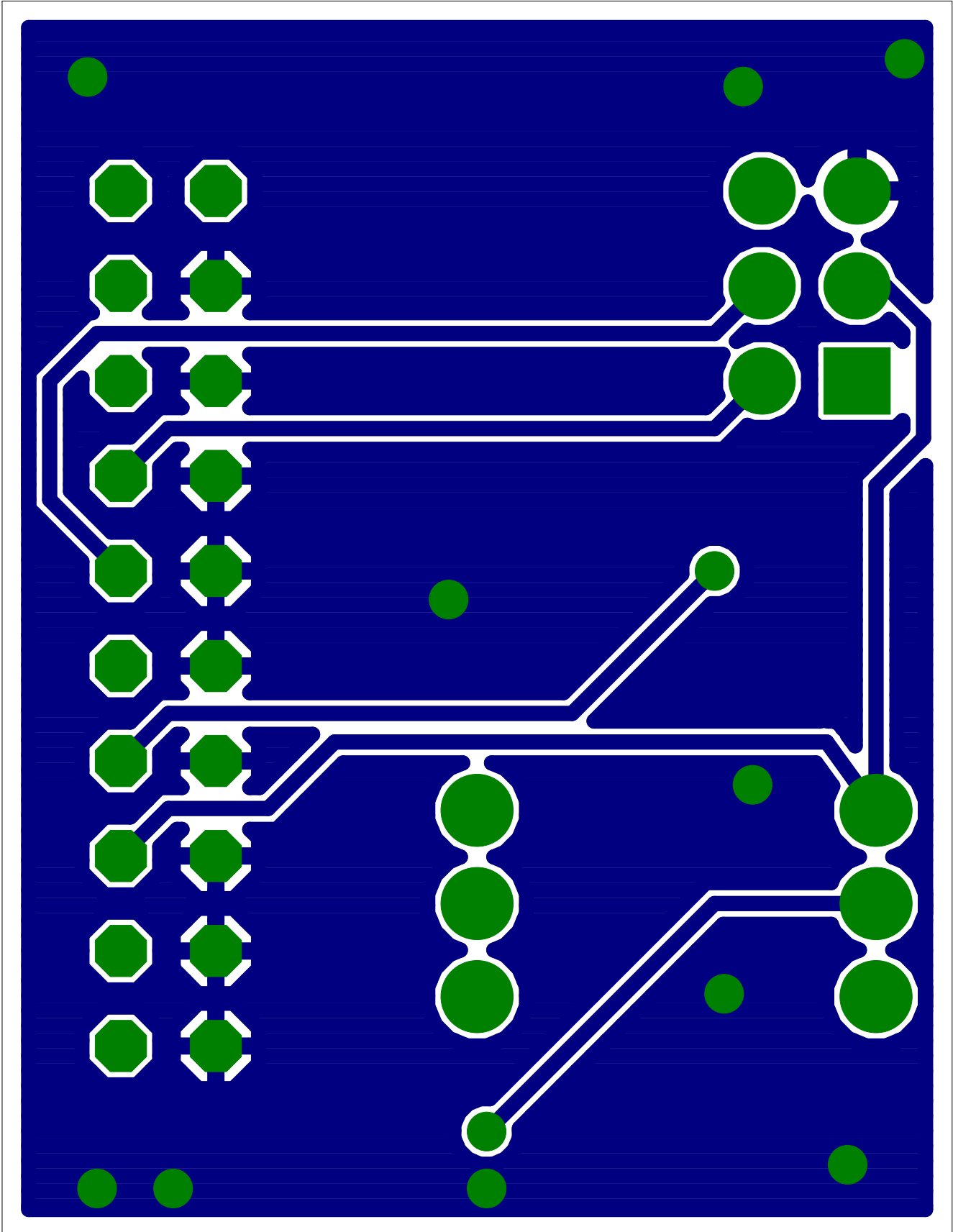


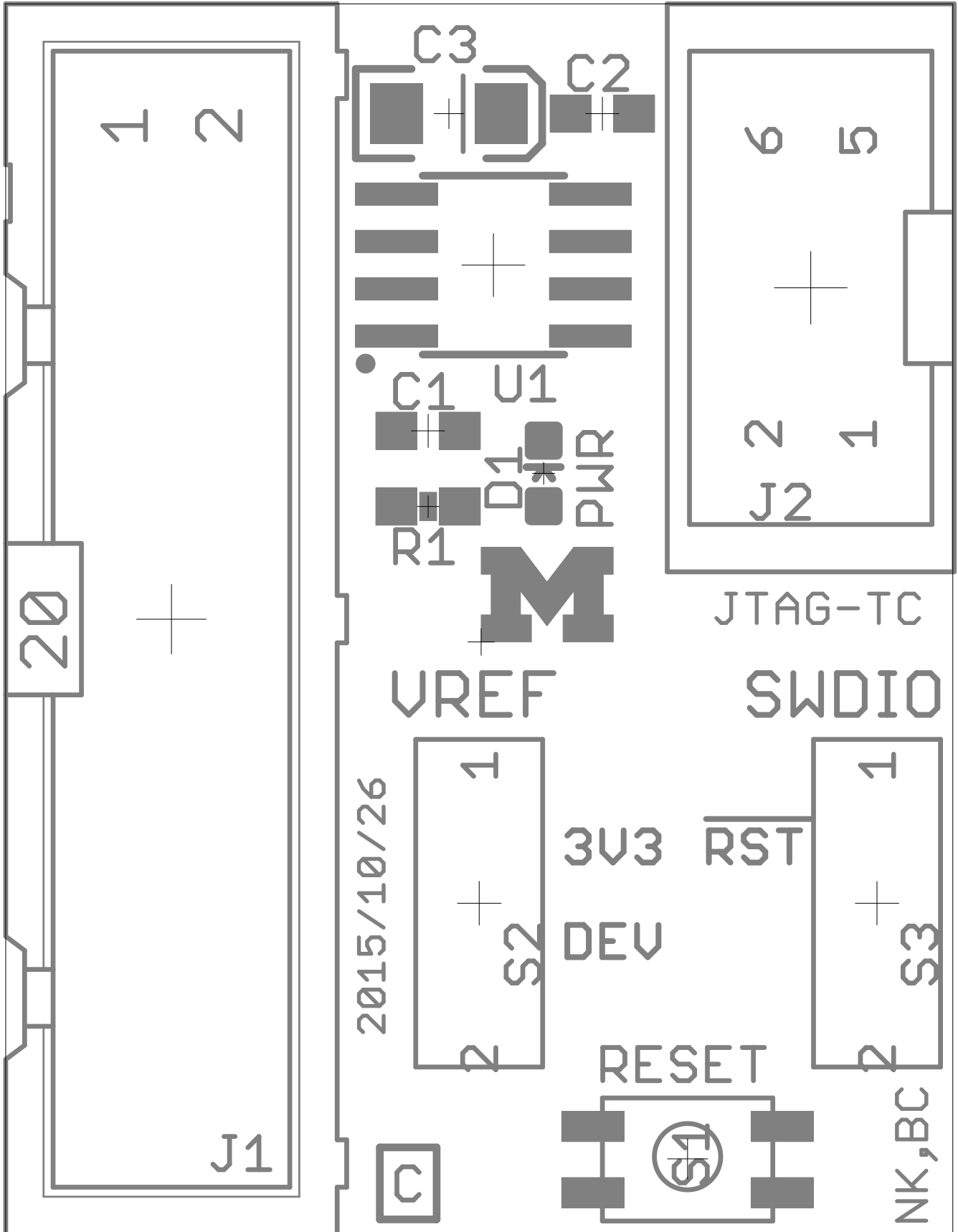


Top Copper Layer

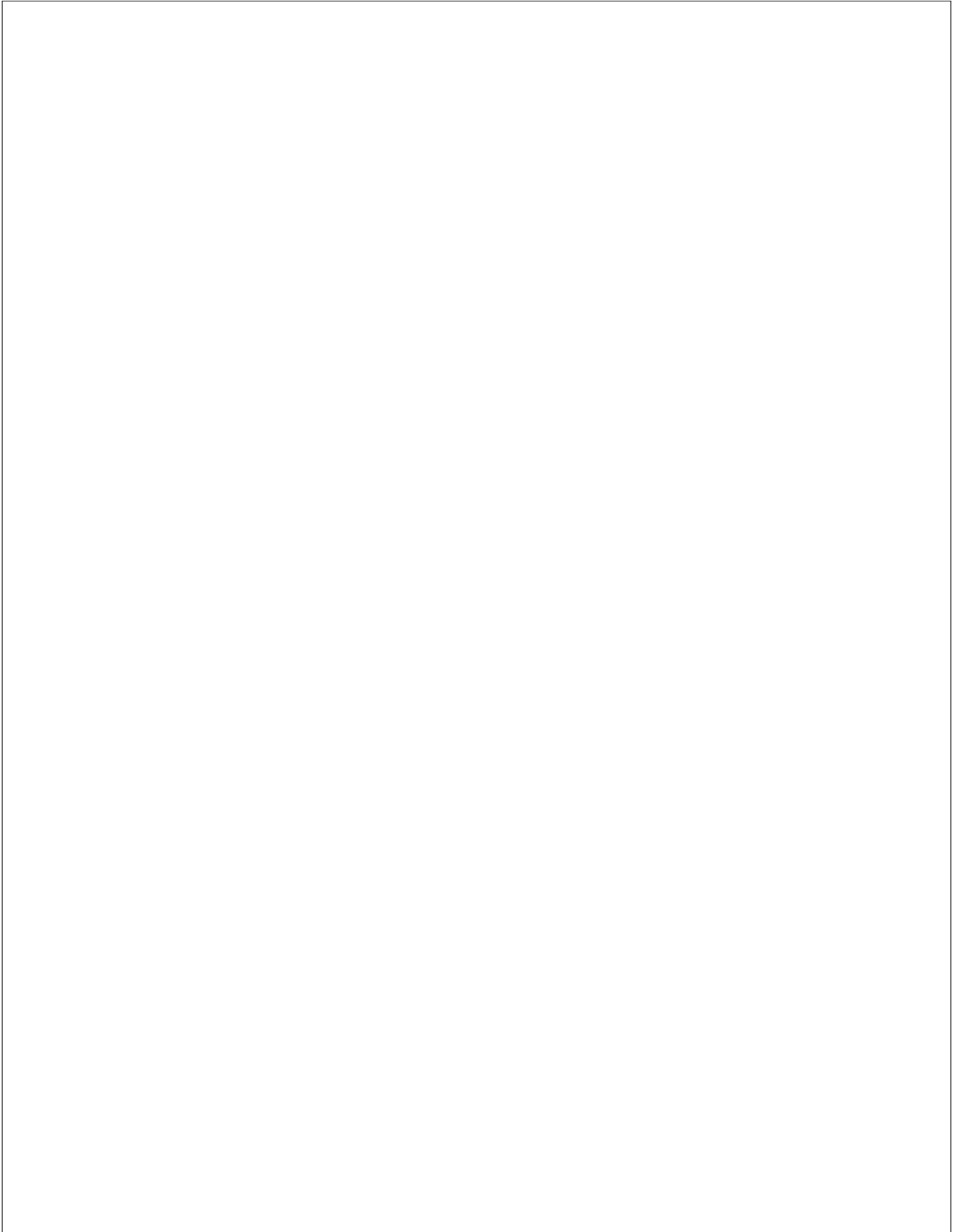


Bottom Copper Layer



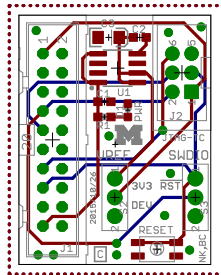


Bottom Paste Layer with Silkscreen

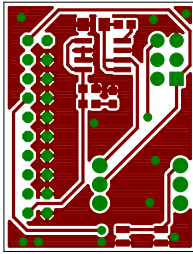




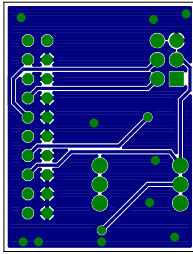
Top and Bottom Layers 1:1 Scale



Top Layer 1:1 Scale



Bottom Copper Layer 1:1 Scale



Sheet1

Qty	Value	Device	Package	Parts
2	0.01uF	C-EUC0603	C0603	C1, C2
1	10uF	CAP_POL1206	EIA3216	C3
1	BLUE	LED-BLUE0603	LED-0603	D1
1		ML20	ML20	J1
1	JLINK_6PIN_TAG-CON	JLINK_6PIN_TAG-CON	2X3_MALE_SHROUDED_0.10	J2
1	470	RESISTOR0603-RES	0603-RES	R1
1	EVQP2	EVQP2	EVQP2	S1
2	TE_SSA12/SPDT	TE_SSA12/SPDT	TE_SSA12/SPDT	S2, S3
1	LT1763CS8-3.3	LT1763CS8-3.3	SOIC8	U1

Sheet1

<b>Description</b>	<b>DIGIKEY</b>
CAPACITOR, European symbol	490-1512-1-ND
Capacitor Polarized	399-3684-1-ND
Blue LEDs for production use	
HARTING	S9172-ND
This is a 6-pin Tag Connect header with the J-Lin3M15451-ND	
Resistor	
SWITCH TACTILE SPST-NO 0.02A 15V	P11084SCT-ND
SWITCH SLIDE SPDT 2POS SSA SER	450-1602-ND
500mA, Low Noise, LDO Micropower Regulators	LT1763CS8-3.3#TRPBFCT-ND