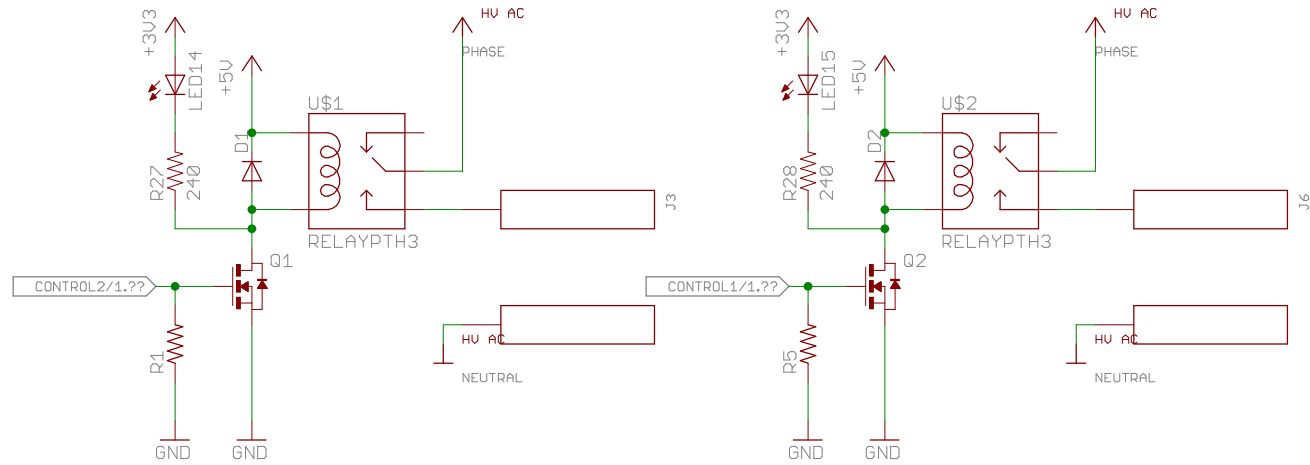
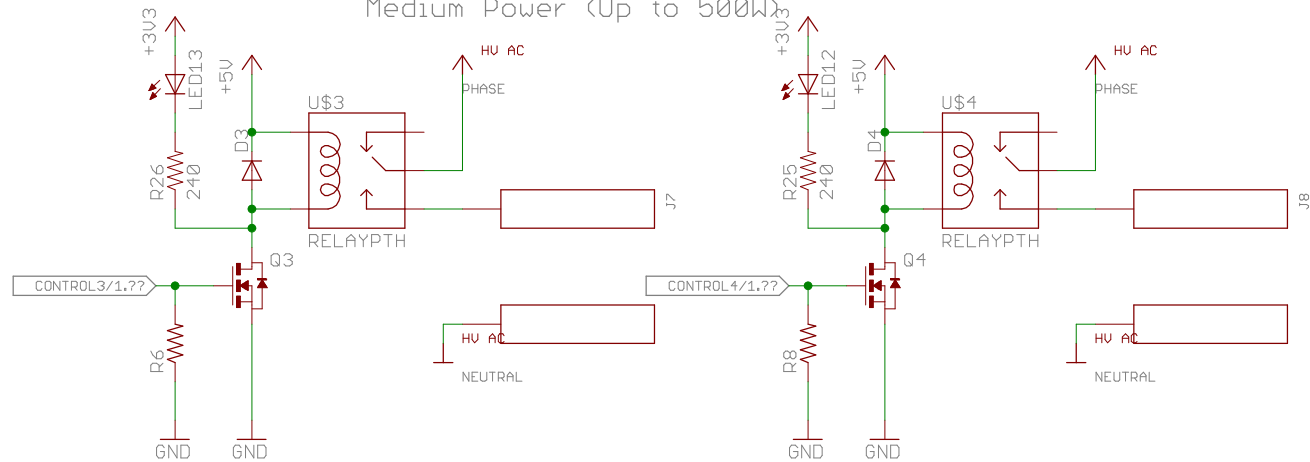


High Power (Up to 1000W)

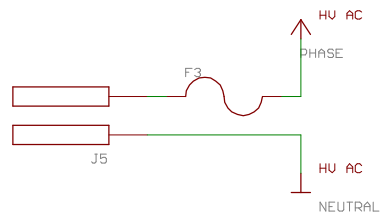
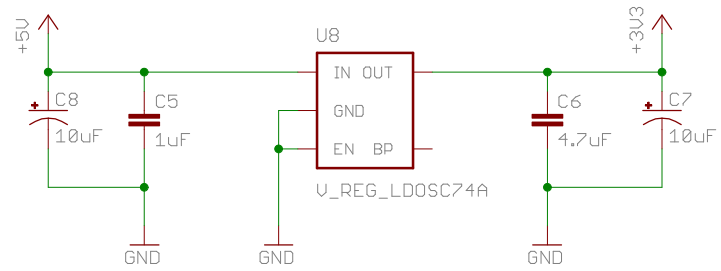
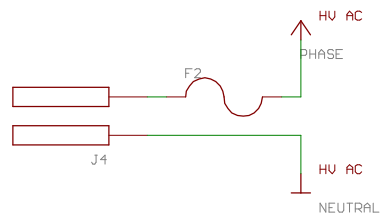
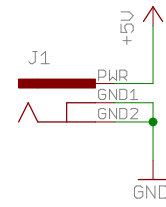
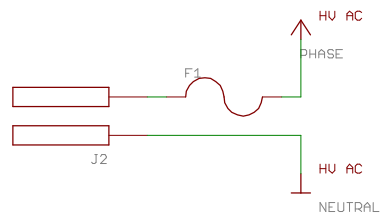


Medium Power (Up to 500W)

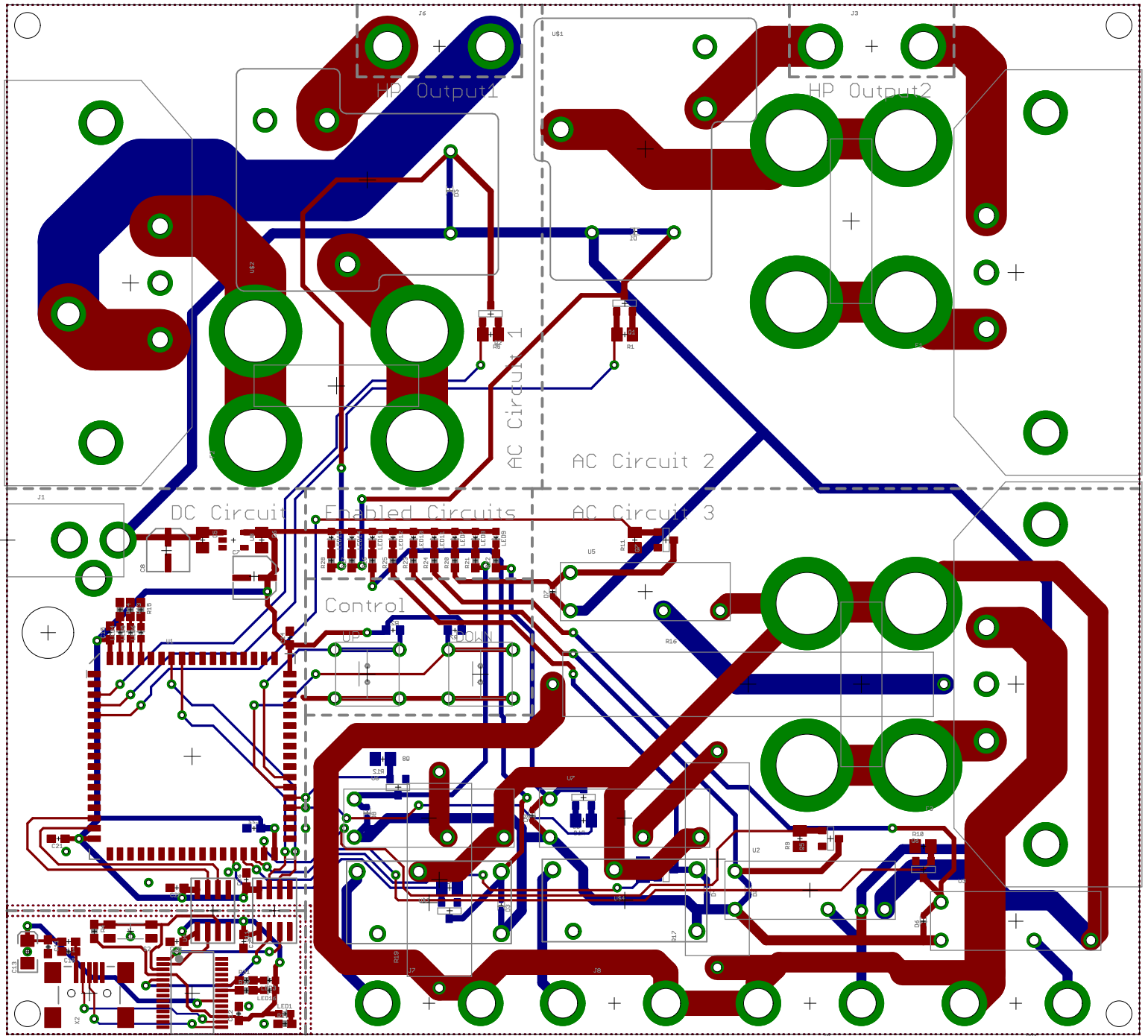


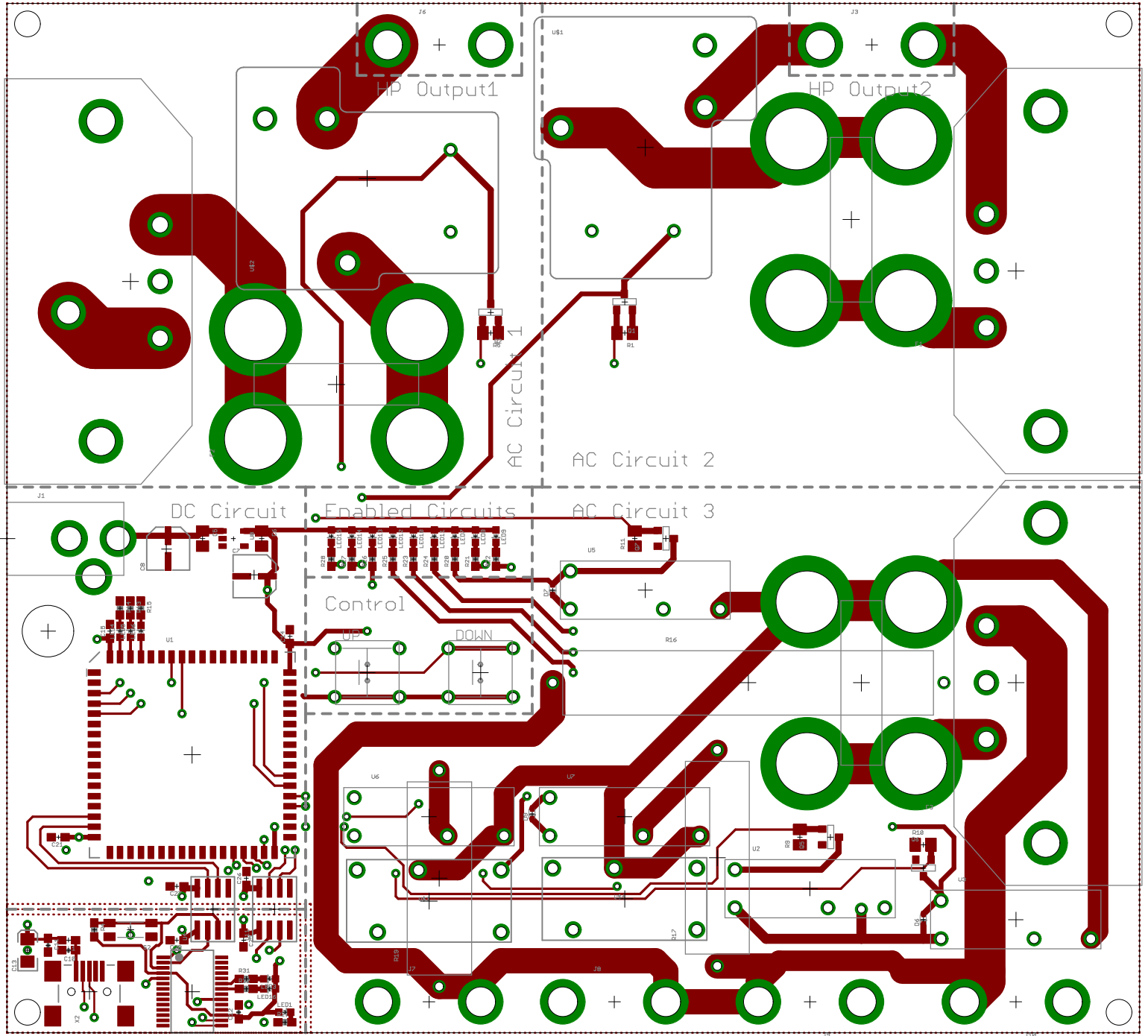
Low Power (Up to 100W)

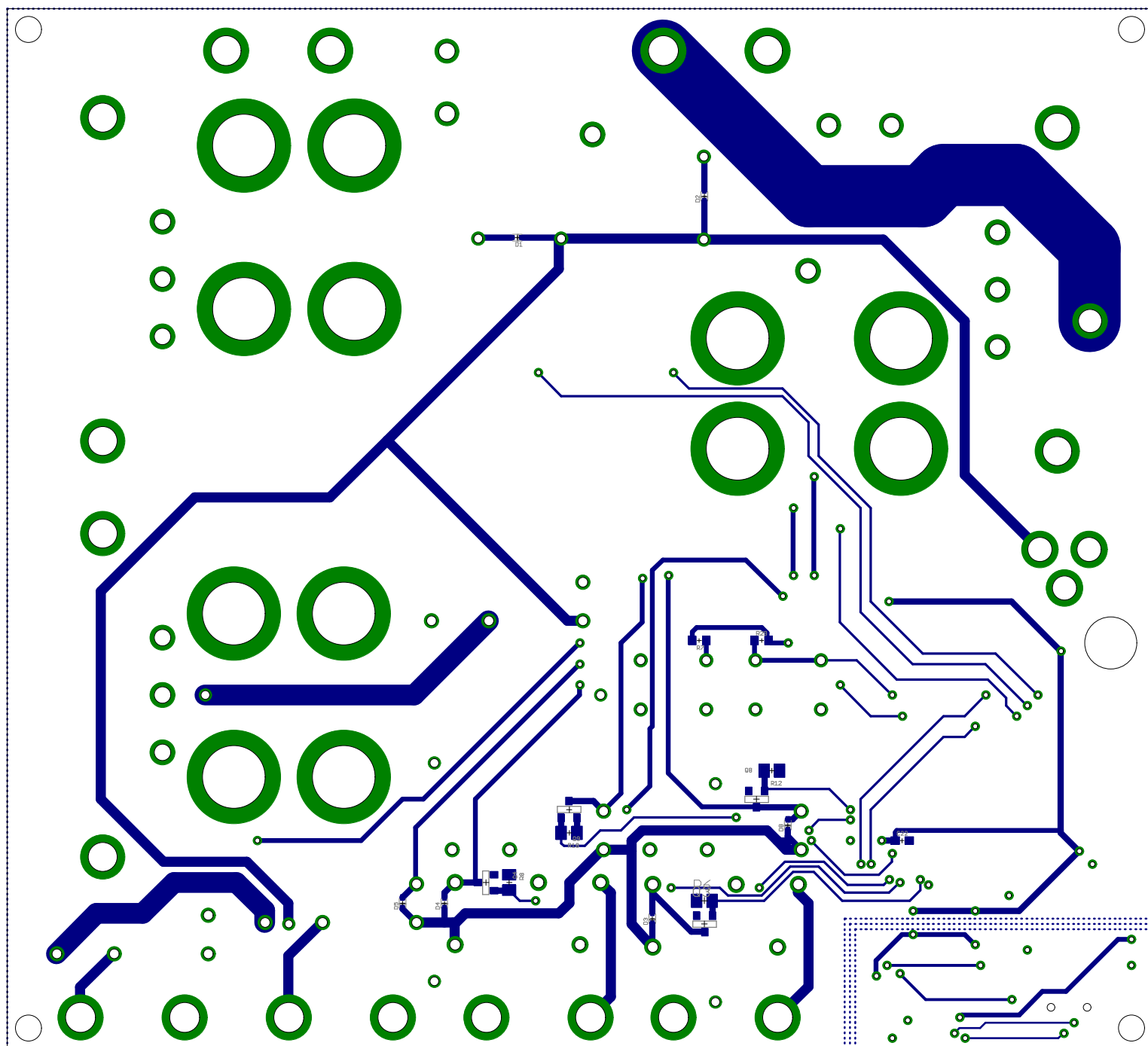




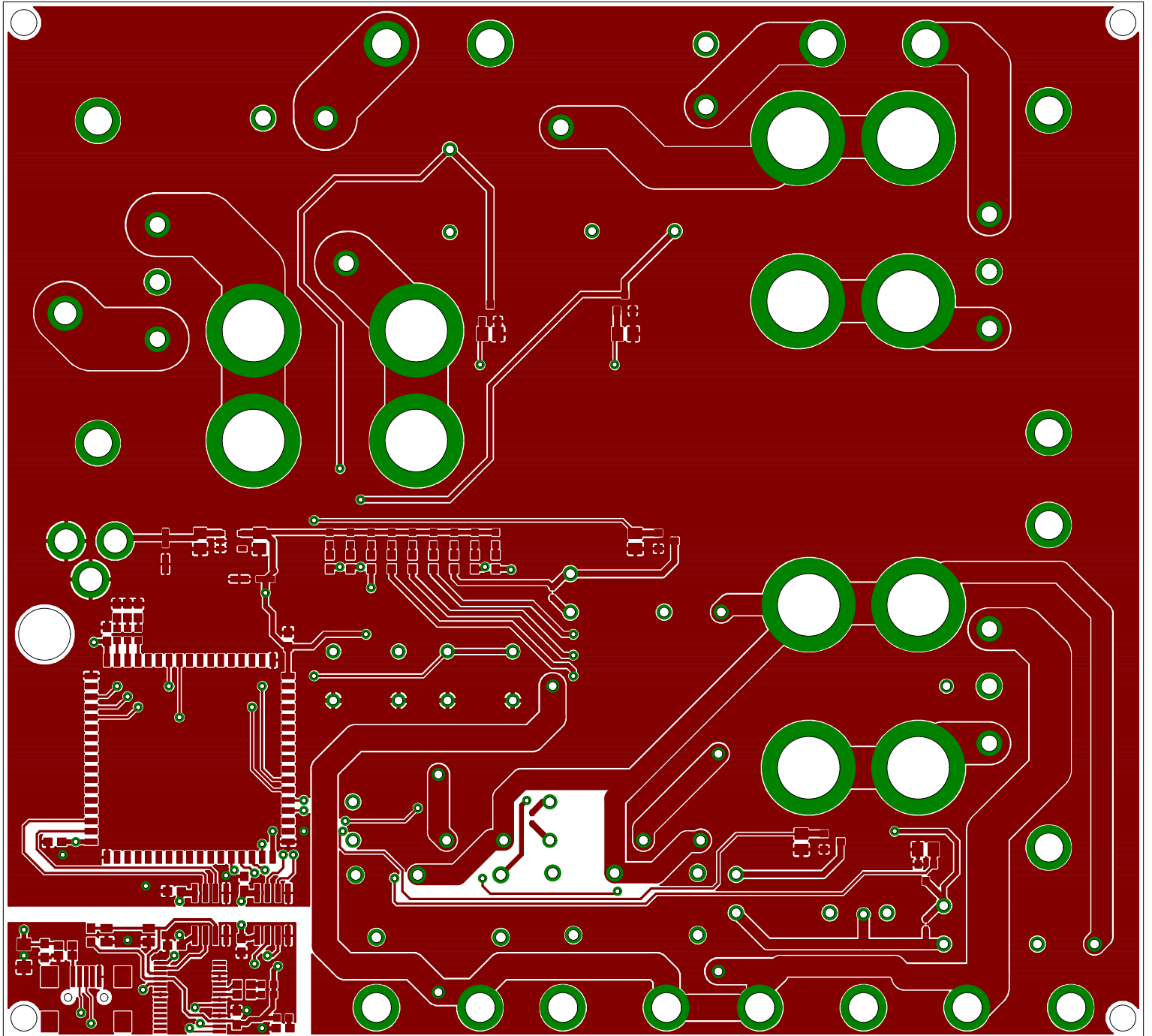
Top and Bottom Layers



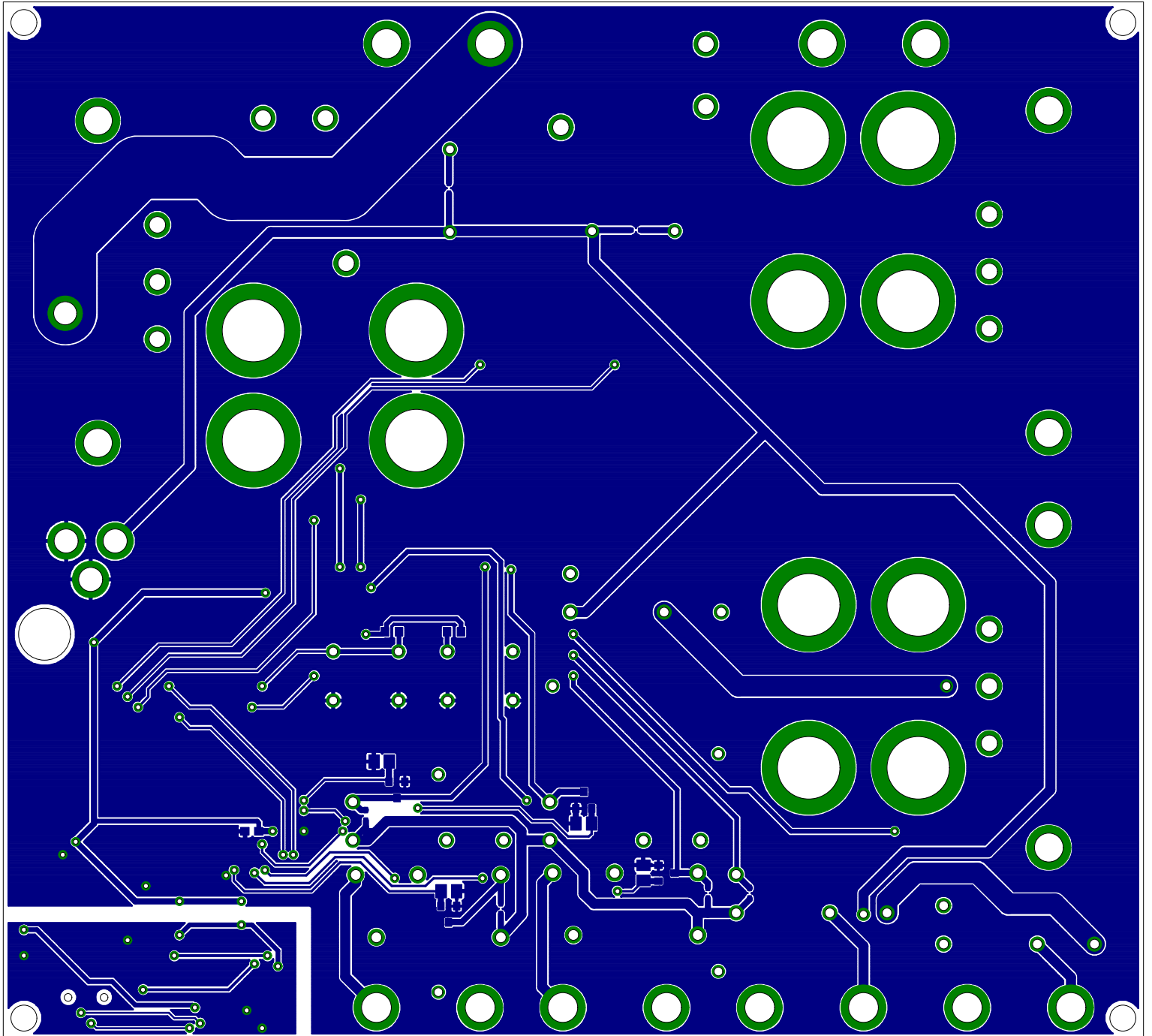




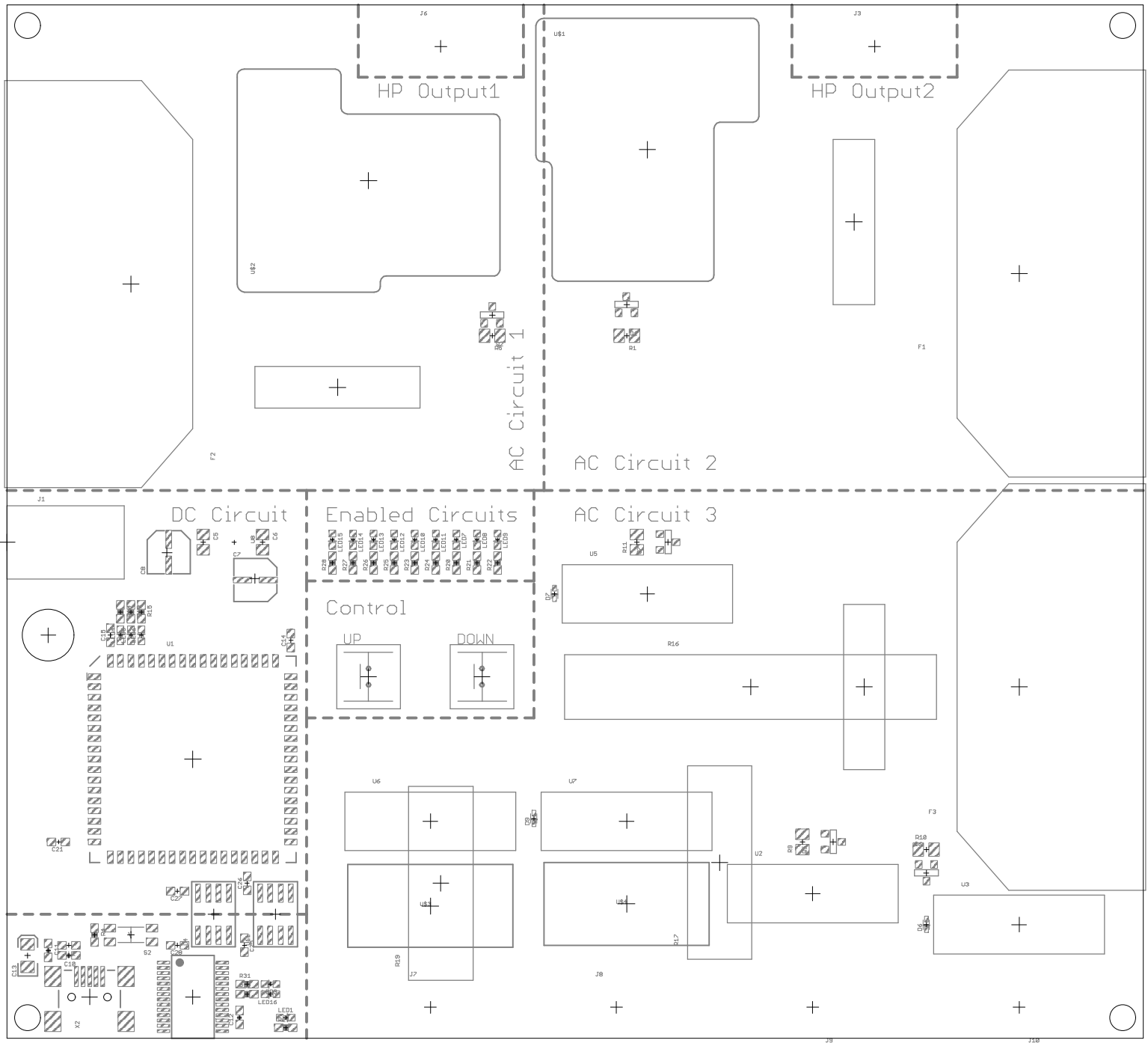
Top Copper Layer



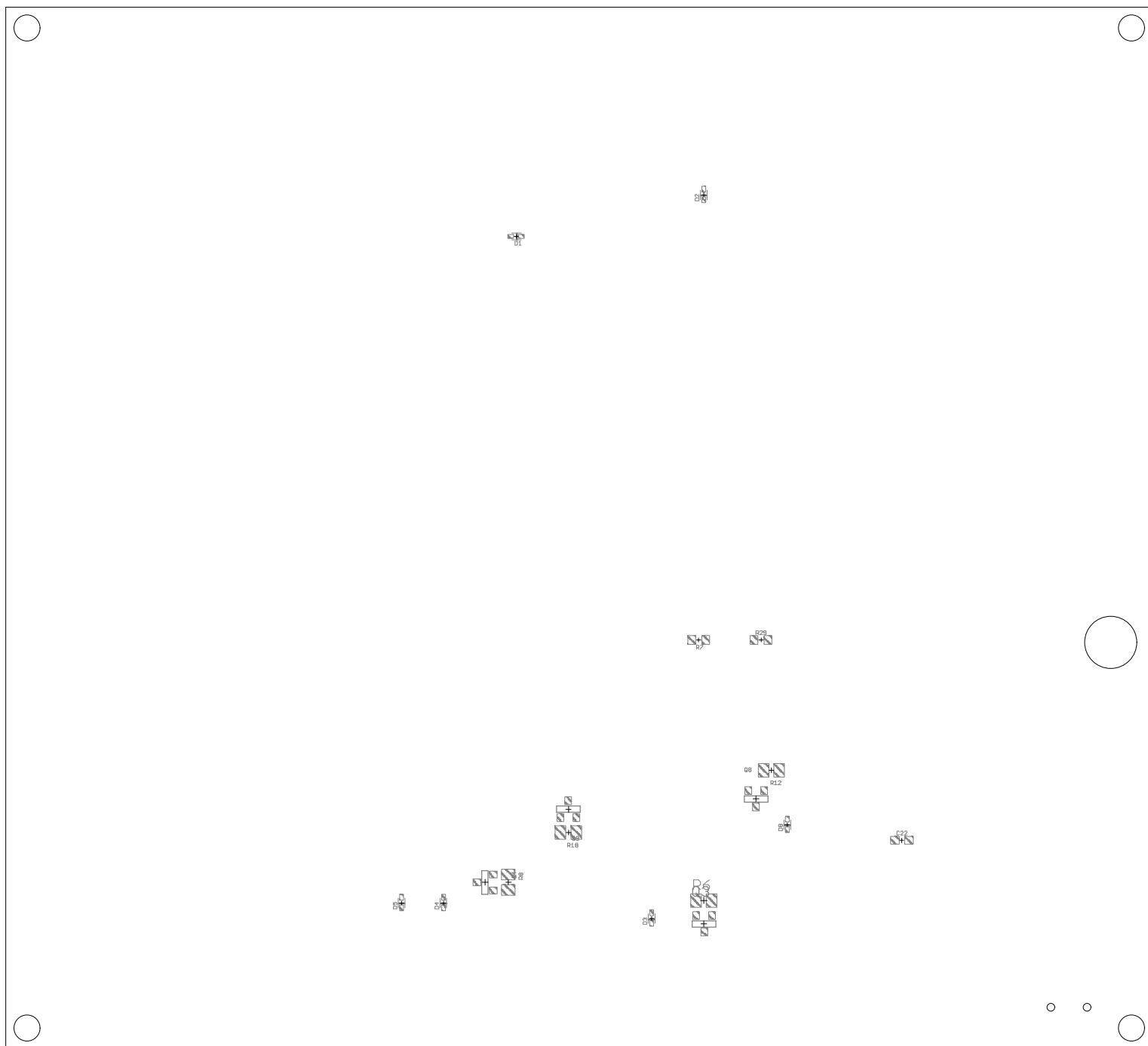
Bottom Copper Layer



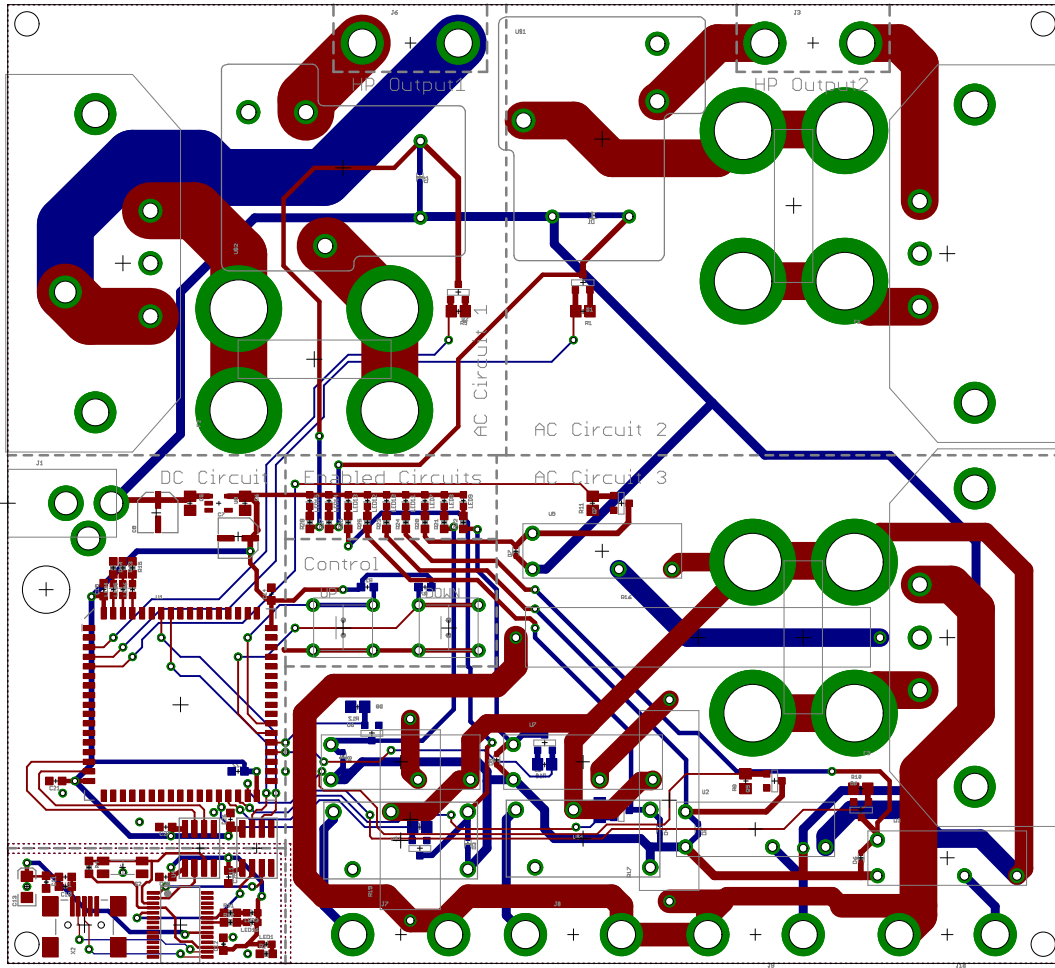
Top Paste Layer with Silkscreen

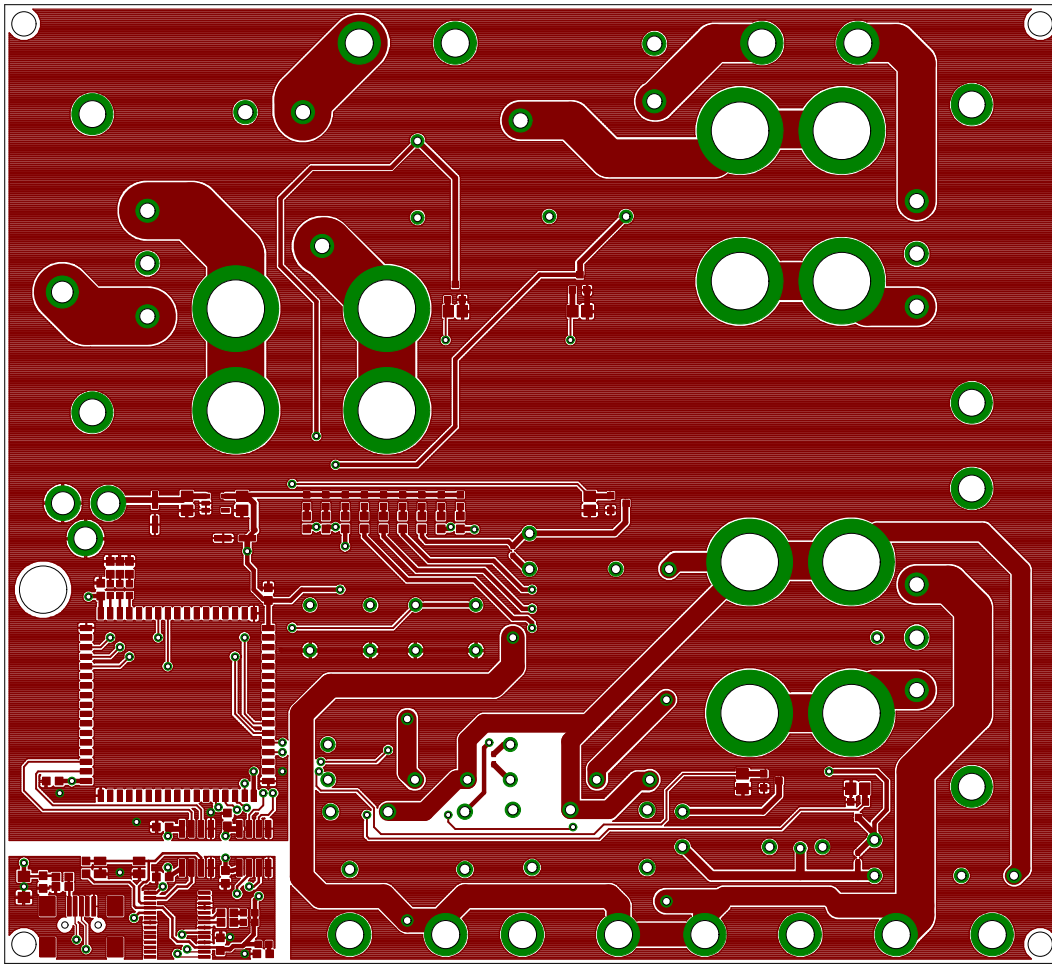


Bottom Paste Layer with Silkscreen

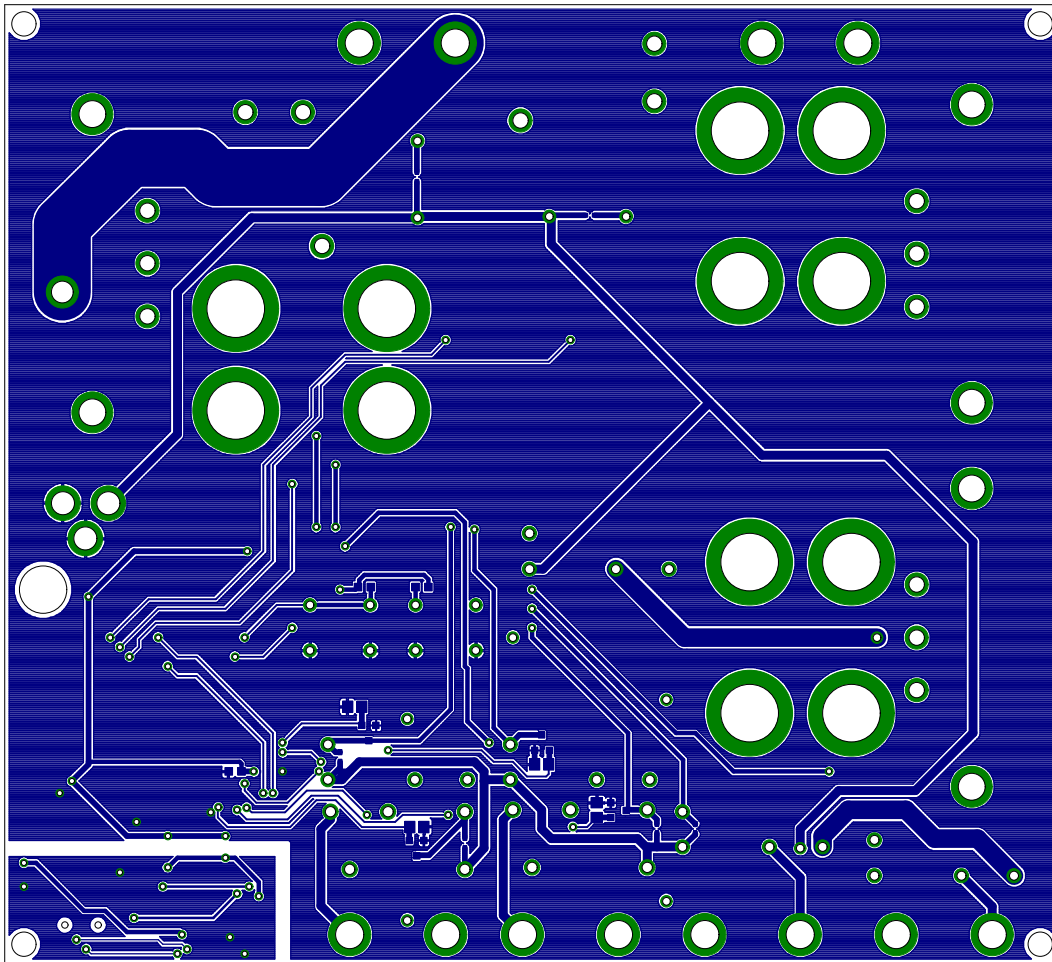


Top and Bottom Layers 1:1 Scale





Bottom Copper Layer 1:1 Scale



| Part | Value | Device | Package | Description | DIGIKEY | DIGIKEY2 | DIGIKEY3 | MF | MPN | OC_FARNELL | OC_NEWARK |
|-------|-----------------------|-----------------------|----------------|---|-----------------|-------------|-------------|----|---------|------------|-----------|
| C5 | 1uF | C-EUC0805 | C0805 | CAPACITOR, European symbol | 445-7632-1-ND | | | | | | |
| C6 | 4.7uF | C-EUC0805 | C0805 | CAPACITOR, European symbol | 445-1605-1-ND | | | | | | |
| C7 | 10uF | CAP_POLB | PANASONIC_B | Capacitor Polarized | PCE3878CT-ND | | | | | | |
| C8 | 10uF | CAP_POLB | PANASONIC_B | Capacitor Polarized | PCE3878CT-ND | | | | | | |
| C10 | | CAP0603-CAP | 0603-CAP | Capacitor | 445-1316-1-ND | | | | | | |
| C11 | | CAP0603-CAP | 0603-CAP | Capacitor | 445-1316-1-ND | | | | | | |
| C12 | | CAP0603-CAP | 0603-CAP | Capacitor | 445-1316-1-ND | | | | | | |
| C13 | | CAP_POL1206 | EIA3216 | Capacitor Polarized | 478-1655-1-ND | | | | | | |
| C14 | 0.1uF | C-EUC0603 | C0603 | CAPACITOR, European symbol | 445-1316-1-ND | | | | | | |
| C15 | 0.1uF | C-EUC0603 | C0603 | CAPACITOR, European symbol | 445-1316-1-ND | | | | | | |
| C21 | 0.1uF | C-EUC0603 | C0603 | CAPACITOR, European symbol | 445-1316-1-ND | | | | | | |
| C22 | 0.1uF | C-EUC0603 | C0603 | CAPACITOR, European symbol | 445-1316-1-ND | | | | | | |
| C25 | 0.1uF | C-EUC0603 | C0603 | CAPACITOR, European symbol | 445-1316-1-ND | | | | | | |
| C26 | 0.1uF | C-EUC0603 | C0603 | CAPACITOR, European symbol | 445-1316-1-ND | | | | | | |
| C27 | 0.1uF | C-EUC0603 | C0603 | CAPACITOR, European symbol | 445-1316-1-ND | | | | | | |
| C28 | 0.1uF | C-EUC0603 | C0603 | CAPACITOR, European symbol | 445-1316-1-ND | | | | | | |
| D1 | | DIODES05D23 | S05D23 | Diode | 1N4148WTCT-ND | | | | | | |
| D2 | | DIODES05D23 | S05D23 | Diode | 1N4148WTCT-ND | | | | | | |
| D3 | | DIODES05D23 | S05D23 | Diode | 1N4148WTCT-ND | | | | | | |
| D4 | | DIODES05D23 | S05D23 | Diode | 1N4148WTCT-ND | | | | | | |
| D5 | | DIODES05D23 | S05D23 | Diode | 1N4148WTCT-ND | | | | | | |
| D6 | | DIODES05D23 | S05D23 | Diode | 1N4148WTCT-ND | | | | | | |
| D7 | | DIODES05D23 | S05D23 | Diode | 1N4148WTCT-ND | | | | | | |
| D8 | | DIODES05D23 | S05D23 | Diode | 1N4148WTCT-ND | | | | | | |
| D9 | | DIODES05D23 | S05D23 | Diode | 1N4148WTCT-ND | | | | | | |
| DOWN | PUSHBUTTON_SWITCHTHRU | PUSHBUTTON_SWITCHTHRU | SWITCH_SPST_NO | | P123465-ND | | | | | | |
| F1 | 10A, 35A break | FUSE | F_FC211 | | 507-1256-ND | 507-1415-ND | 507-1415-ND | | | | |
| F2 | 10A, 35A break | FUSE | F_FC211 | | 507-1256-ND | 507-1415-ND | 507-1415-ND | | | | |
| F3 | 10A, 35A break | FUSE | F_FC211 | | 507-1256-ND | 507-1415-ND | 507-1415-ND | | | | |
| J1 | DC JACK | DC JACK | DC JACK | | CP-202B-ND | 271-2583-ND | | | | | |
| J2 | POWER_SOCKET | POWER_SOCKET | POWER_SOCKET | | Q219-ND | | | | | | |
| J3 | POWER_PLUGHOLE | POWER_PLUGHOLE | POWER_PLUG | | | | | | | | |
| J4 | POWER_SOCKET | POWER_SOCKET | POWER_SOCKET | | Q219-ND | | | | | | |
| J5 | POWER_SOCKET | POWER_SOCKET | POWER_SOCKET | | Q219-ND | | | | | | |
| J6 | POWER_PLUGHOLE | POWER_PLUGHOLE | POWER_PLUG | | | | | | | | |
| J7 | POWER_PLUGHOLE | POWER_PLUGHOLE | POWER_PLUG | | | | | | | | |
| J8 | POWER_PLUGHOLE | POWER_PLUGHOLE | POWER_PLUG | | | | | | | | |
| J9 | POWER_PLUGHOLE | POWER_PLUGHOLE | POWER_PLUG | | | | | | | | |
| J10 | POWER_PLUGHOLE | POWER_PLUGHOLE | POWER_PLUG | | | | | | | | |
| L1 | | INDUCTOR0603 | 603 | Inductors | 240-2373-1-ND | | | | | | |
| LED1 | | LED0603 | LED-0603 | LEDs | 1080-1405-1-ND | | | | | | |
| LED3 | | LED0603 | LED-0603 | LEDs | 1080-1400-1-ND | | | | | | |
| LED4 | | LED0603 | LED-0603 | LEDs | 1080-1405-1-ND | | | | | | |
| LED5 | | LED0603 | LED-0603 | LEDs | 1080-1405-1-ND | | | | | | |
| LED6 | | LED0603 | LED-0603 | LEDs | 1080-1405-1-ND | | | | | | |
| LED7 | | LED0603 | LED-0603 | LEDs | 1080-1405-1-ND | | | | | | |
| LED8 | | LED0603 | LED-0603 | LEDs | 1080-1405-1-ND | | | | | | |
| LED9 | | LED0603 | LED-0603 | LEDs | 1080-1405-1-ND | | | | | | |
| LED10 | | LED0603 | LED-0603 | LEDs | 1080-1405-1-ND | | | | | | |
| LED11 | | LED0603 | LED-0603 | LEDs | 1080-1405-1-ND | | | | | | |
| LED12 | | LED0603 | LED-0603 | LEDs | 1080-1405-1-ND | | | | | | |
| LED13 | | LED0603 | LED-0603 | LEDs | 1080-1405-1-ND | | | | | | |
| LED14 | | LED0603 | LED-0603 | LEDs | 1080-1405-1-ND | | | | | | |
| LED15 | | LED0603 | LED-0603 | LEDs | 1080-1405-1-ND | | | | | | |
| LED16 | | LED0603 | LED-0603 | LEDs | 1080-1405-1-ND | | | | | | |
| Q1 | | NM05S0T23 | SOT-23 | MOS FET | FDV303NCT-ND | | | | | | |
| Q2 | | NM05S0T23 | SOT-23 | MOS FET | FDV303NCT-ND | | | | | | |
| Q3 | | NM05S0T23 | SOT-23 | MOS FET | FDV303NCT-ND | | | | | | |
| Q4 | | NM05S0T23 | SOT-23 | MOS FET | FDV303NCT-ND | | | | | | |
| Q5 | | NM05S0T23 | SOT-23 | MOS FET | FDV303NCT-ND | | | | | | |
| Q6 | | NM05S0T23 | SOT-23 | MOS FET | FDV303NCT-ND | | | | | | |
| Q7 | | NM05S0T23 | SOT-23 | MOS FET | FDV303NCT-ND | | | | | | |
| Q8 | | NM05S0T23 | SOT-23 | MOS FET | FDV303NCT-ND | | | | | | |
| Q9 | | NM05S0T23 | SOT-23 | MOS FET | FDV303NCT-ND | | | | | | |
| R1 | | R-US_M0805 | M0805 | RESISTOR, American symbol | P10KACT-ND | | | | | | |
| R2 | | 240 RESISTOR0603-RES | 0603-RES | Resistor | P240GCT-ND | | | | | | |
| R4 | 10k | RESISTOR0603-RES | 0603-RES | Resistor | P10KGCT-ND | | | | | | |
| R5 | | R-US_M0805 | M0805 | RESISTOR, American symbol | P10KACT-ND | | | | | | |
| R6 | | R-US_M0805 | M0805 | RESISTOR, American symbol | P10KACT-ND | | | | | | |
| R7 | 10k | R-US_R0603 | R0603 | RESISTOR, American symbol | P10KGCT-ND | | | | | | |
| R8 | | R-US_M0805 | M0805 | RESISTOR, American symbol | P10KACT-ND | | | | | | |
| R9 | | R-US_M0805 | M0805 | RESISTOR, American symbol | P10KACT-ND | | | | | | |
| R10 | | R-US_M0805 | M0805 | RESISTOR, American symbol | P10KACT-ND | | | | | | |
| R11 | | R-US_M0805 | M0805 | RESISTOR, American symbol | P10KACT-ND | | | | | | |
| R12 | | R-US_M0805 | M0805 | RESISTOR, American symbol | P10KACT-ND | | | | | | |
| R13 | | 240 RESISTOR0603-RES | 0603-RES | Resistor | P240GCT-ND | | | | | | |
| R14 | | 240 RESISTOR0603-RES | 0603-RES | Resistor | P240GCT-ND | | | | | | |
| R15 | | 240 RESISTOR0603-RES | 0603-RES | Resistor | P240GCT-ND | | | | | | |
| R16 | 3k | AXIAL_RESISTORALS010 | R_ALSR10 | | ALSR10-3.0K-ND | | | | | | |
| R17 | 12.5k | AXIAL_RESISTORALS010 | R_ALSR05 | | ALSR5F-12.5K-ND | | | | | | |
| R18 | | R-US_M0805 | M0805 | RESISTOR, American symbol | P10KACT-ND | | | | | | |
| R19 | 6k | AXIAL_RESISTORALS010 | R_ALSR05 | | ALSR5J-6.0K-ND | | | | | | |
| R20 | | 240 RESISTOR0603-RES | 0603-RES | Resistor | P240GCT-ND | | | | | | |
| R21 | | 240 RESISTOR0603-RES | 0603-RES | Resistor | P240GCT-ND | | | | | | |
| R22 | | 240 RESISTOR0603-RES | 0603-RES | Resistor | P240GCT-ND | | | | | | |
| R23 | | 240 RESISTOR0603-RES | 0603-RES | Resistor | P240GCT-ND | | | | | | |
| R24 | | 240 RESISTOR0603-RES | 0603-RES | Resistor | P240GCT-ND | | | | | | |
| R25 | | 240 RESISTOR0603-RES | 0603-RES | Resistor | P240GCT-ND | | | | | | |
| R26 | | 240 RESISTOR0603-RES | 0603-RES | Resistor | P240GCT-ND | | | | | | |
| R27 | | 240 RESISTOR0603-RES | 0603-RES | Resistor | P240GCT-ND | | | | | | |
| R28 | | 240 RESISTOR0603-RES | 0603-RES | Resistor | P240GCT-ND | | | | | | |
| R29 | 10k | R-US_R0603 | R0603 | RESISTOR, American symbol | P10KGCT-ND | | | | | | |
| R31 | | 240 RESISTOR0603-RES | 0603-RES | Resistor | P240GCT-ND | | | | | | |
| R32 | | 240 RESISTOR0603-RES | 0603-RES | Resistor | P240GCT-ND | | | | | | |
| S2 | SWITCH-OFF-MOM | SWITCH-OFF-MOM | SWITCH-OFF-MOM | | P110845CT-ND | | | | | | |
| US1 | RELAYPTH3 | RELAYPTH3 | RELAY-T9A-2 | SPDT relay (COM-00101) | PB1014-ND | | | | | | |
| US2 | RELAYPTH3 | RELAYPTH3 | RELAY-T9A-2 | SPDT relay (COM-00101) | PB1014-ND | | | | | | |
| US3 | RELAYPTH | RELAYPTH | RELAY-G5Q | SPDT relay (COM-00101) | Z2929-ND | | | | | | |
| US4 | RELAYPTH | RELAYPTH | RELAY-G5Q | SPDT relay (COM-00101) | Z2929-ND | | | | | | |
| U1 | EPIC-CORE_A | EPIC-CORE_A | EPIC-LCC68 | | | | | | | | |
| U2 | RELAY-SPST | RELAY-SPST | RELAY-G5NB | | Z1674-ND | | | | | | |
| U3 | RELAY-SPST | RELAY-SPST | RELAY-G5NB | | Z1674-ND | | | | | | |
| U4 | 2CH_ISO_SAME | 2CH_ISO_SAME | SOIC8 | | 286-21953-1-ND | | | | | | |
| U5 | RELAY-SPST | RELAY-SPST | RELAY-G5NB | | Z1674-ND | | | | | | |
| U6 | RELAY-SPST | RELAY-SPST | RELAY-G5NB | | Z1674-ND | | | | | | |
| U7 | RELAY-SPST | RELAY-SPST | RELAY-G5NB | | Z1674-ND | | | | | | |
| U8 | V_REG_LDOSC74A | V_REG_LDOSC74A | SC74A | Voltage Regulator LDO | 296-11039-2-ND | | | | | | |
| U10 | FT232RL | FT232RL | SSOP28 | Source: http://www.ftdichip.com/Documents/DataSheets/DS_FT232R_v104.pdf | 768-1007-1-ND | | | | FT232RL | 1146032 | 91K9918 |
| U11 | 2CH_ISO_OP | 2CH_ISO_OP | SOIC8 | | 296-21956-1-ND | | | | | | |
| UP | PUSHBUTTON_SWITCHTHRU | PUSHBUTTON_SWITCHTHRU | SWITCH_SPST_NO | | P123465-ND | | | | | | |
| X2 | USB5MD | USB5MD | USB-MINIB | USB Connectors | 670-1190-1-ND | | | | | | |
| Y1 | ANT_HOLE | ANT_HOLE | ANT_HOLE | | | | | | | | |