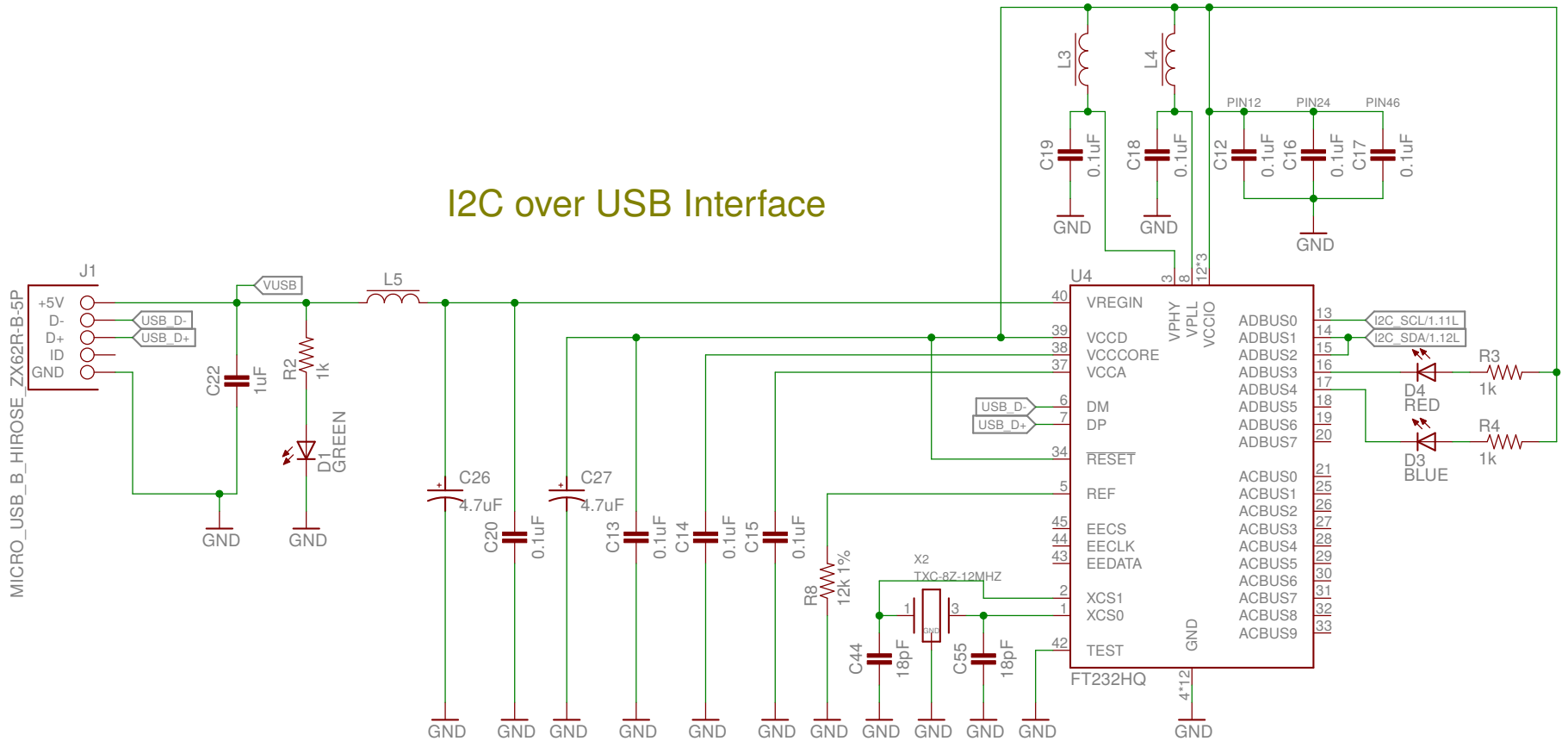
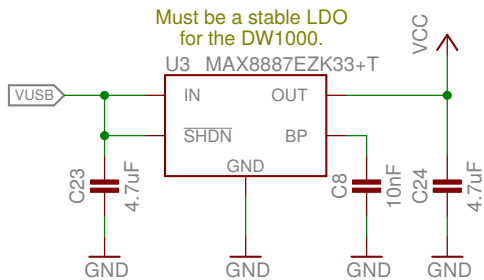



I2C over USB Interface

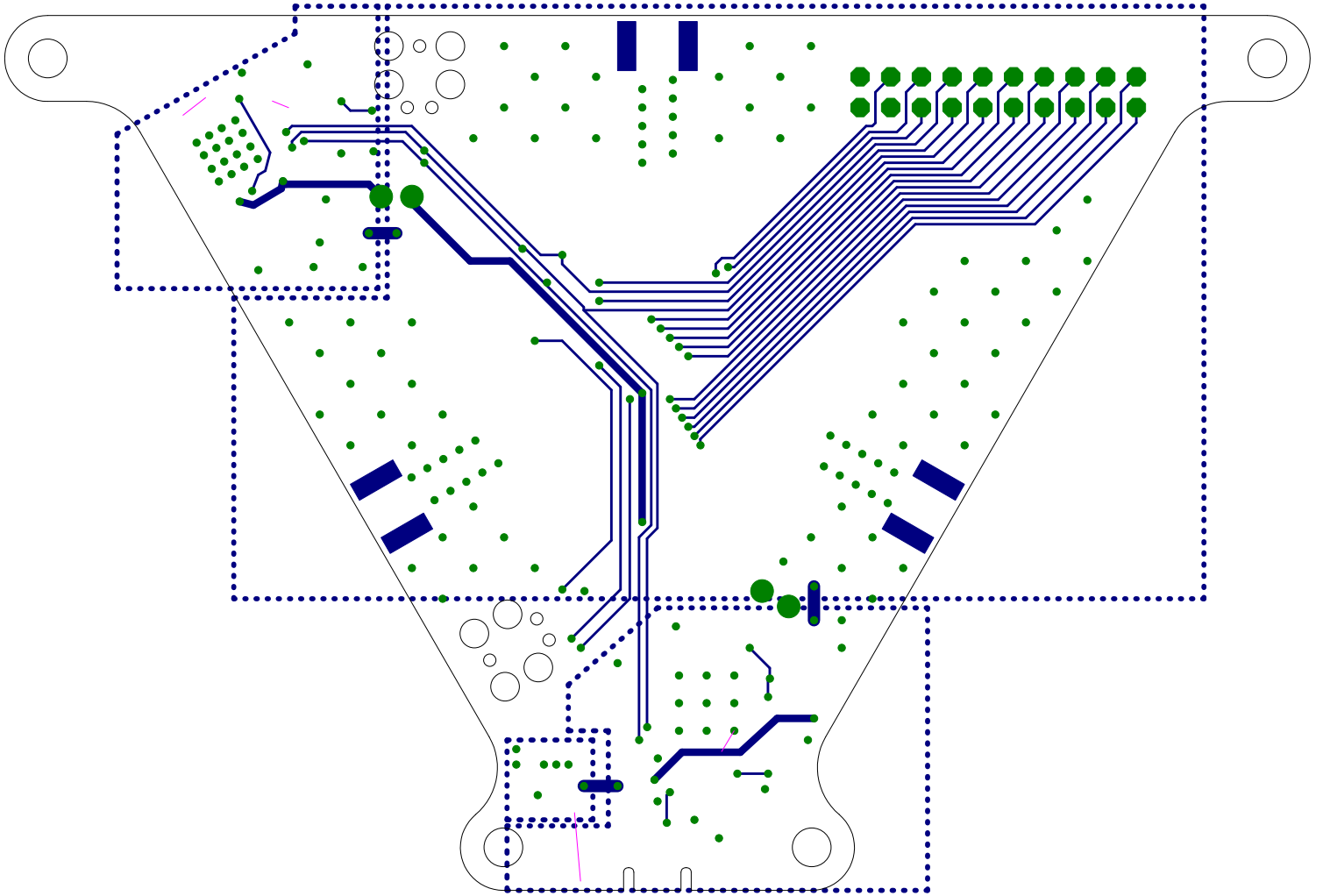


TriPoint Power Supply

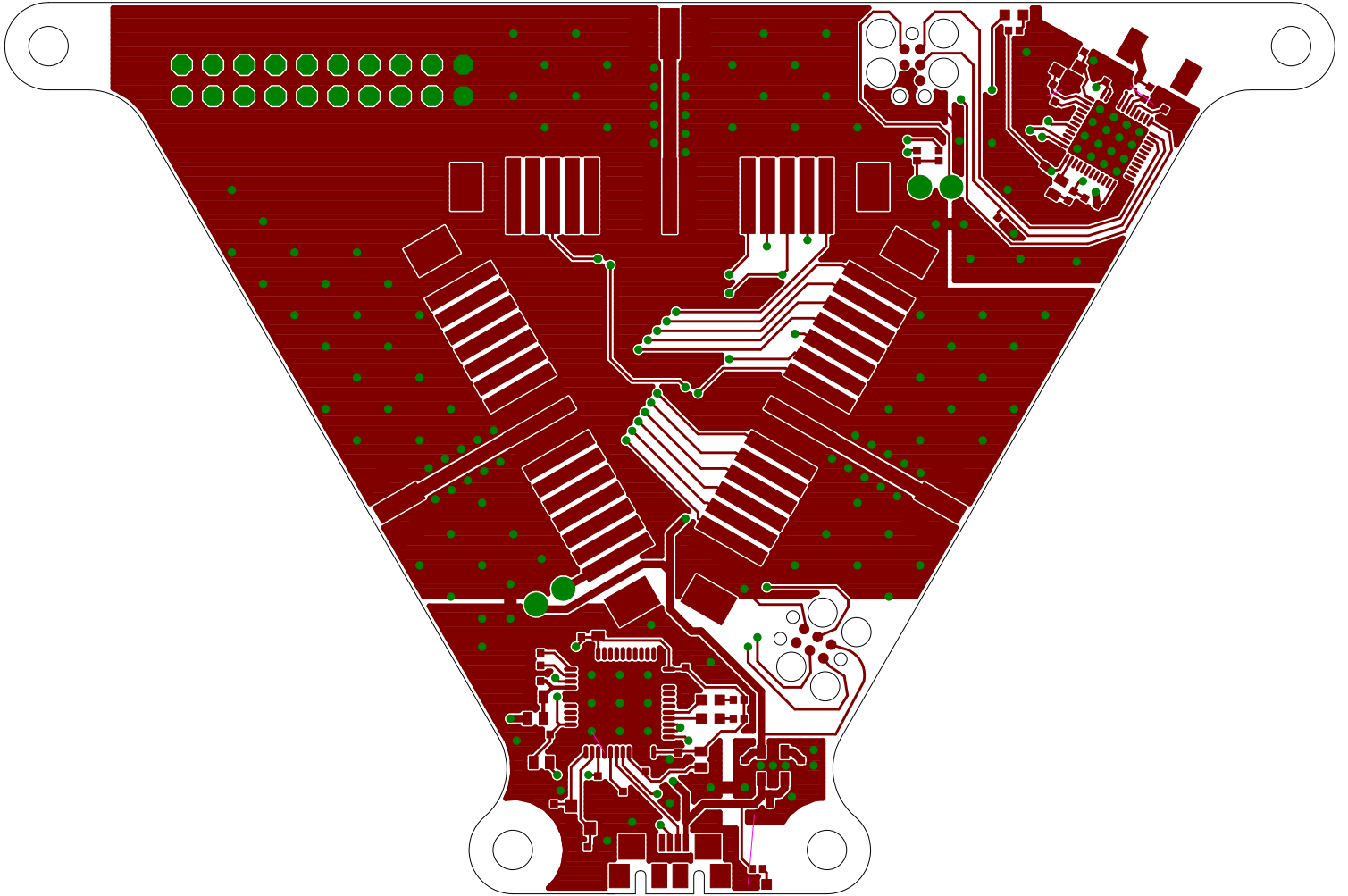


 TriDev	REV: A
	Author: Brad Campbell
Date: 10/19/15 1:49 PM	Sheet: 2/2

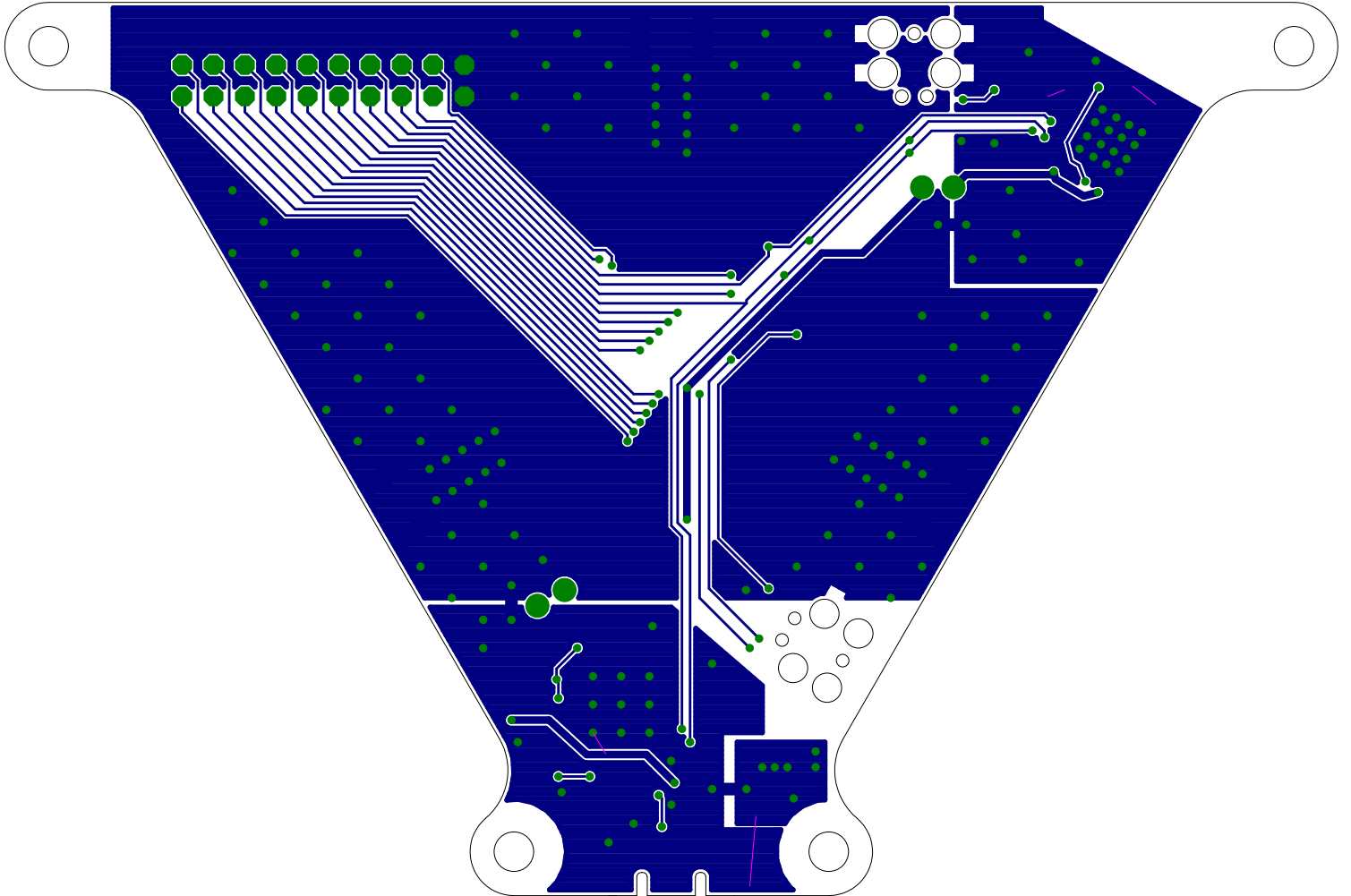
Bottom Layer



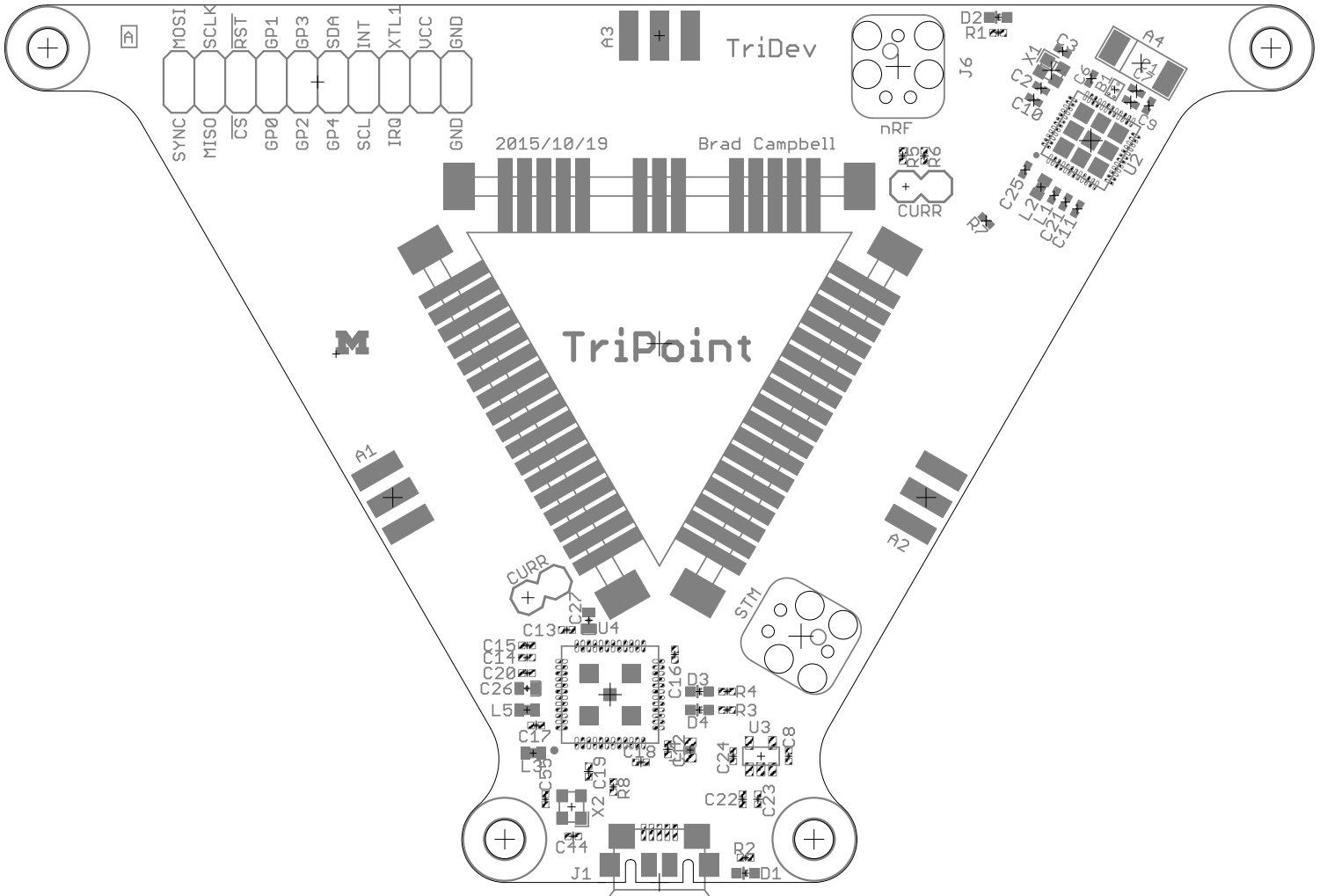
Top Copper Layer



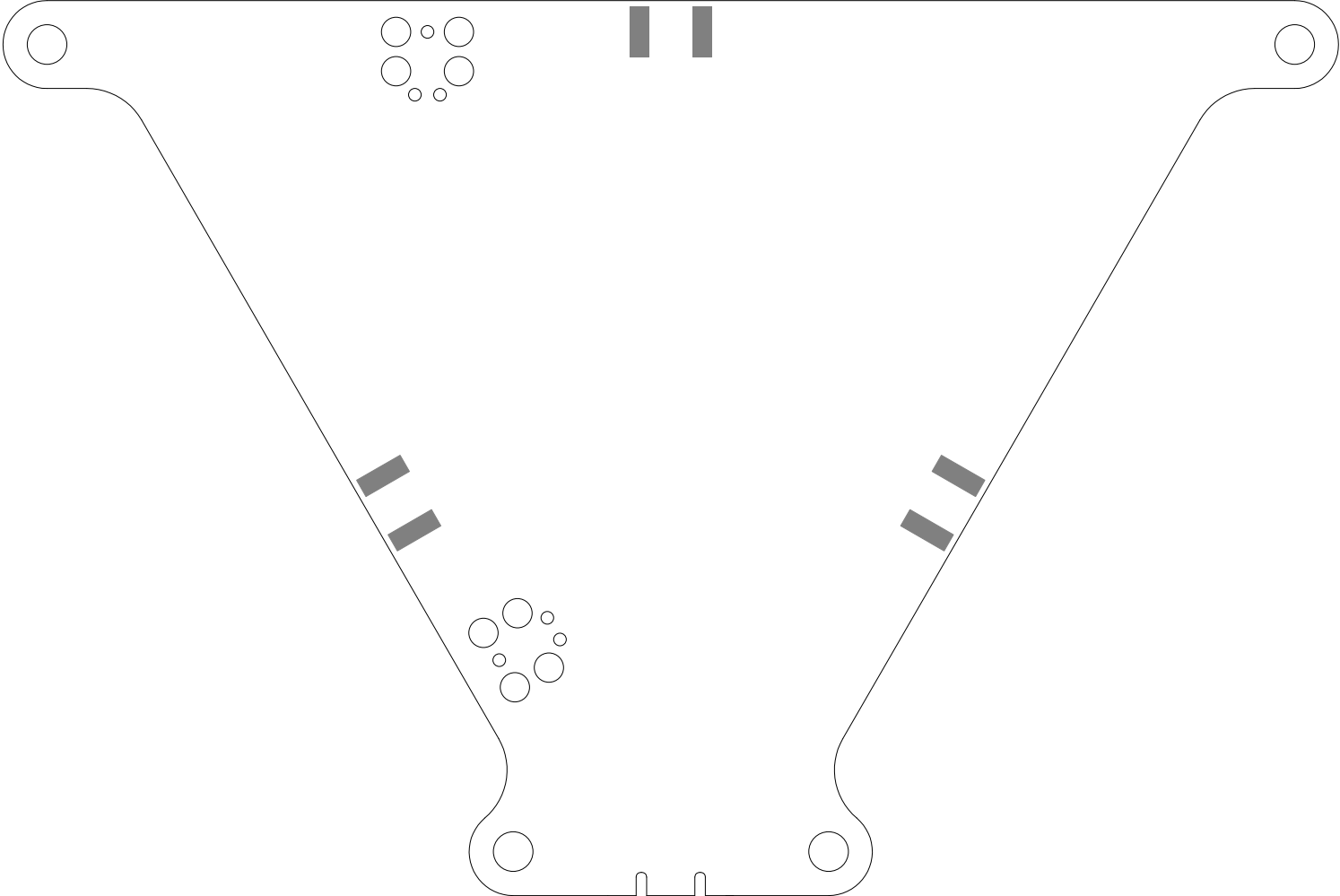
Bottom Copper Layer



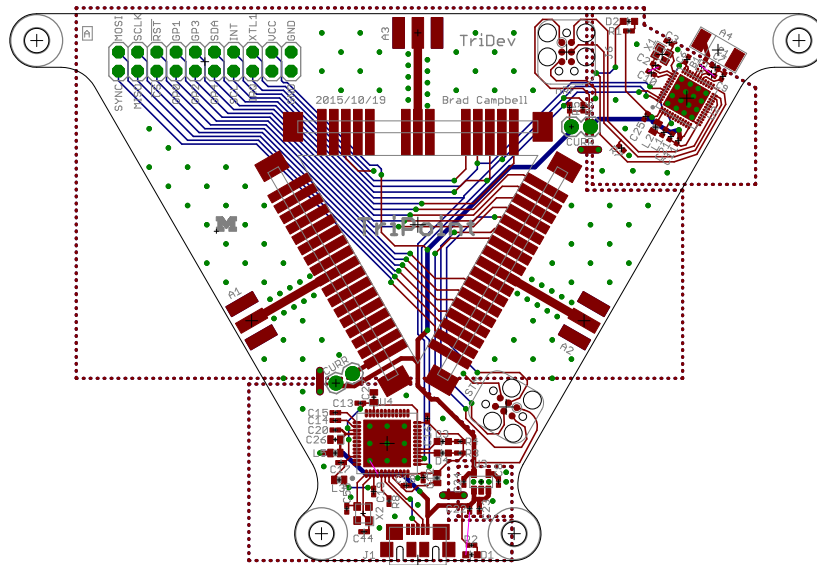
Top Paste Layer with Silkscreen



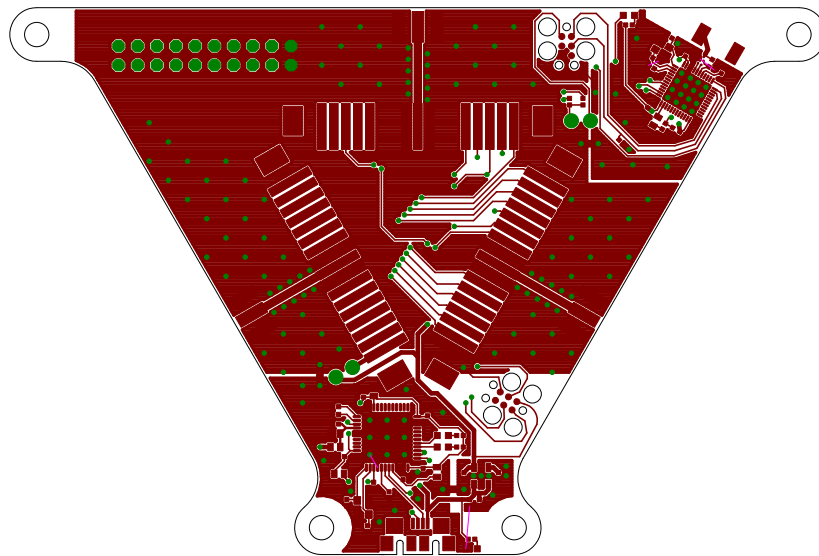
Bottom Paste Layer with Silkscreen



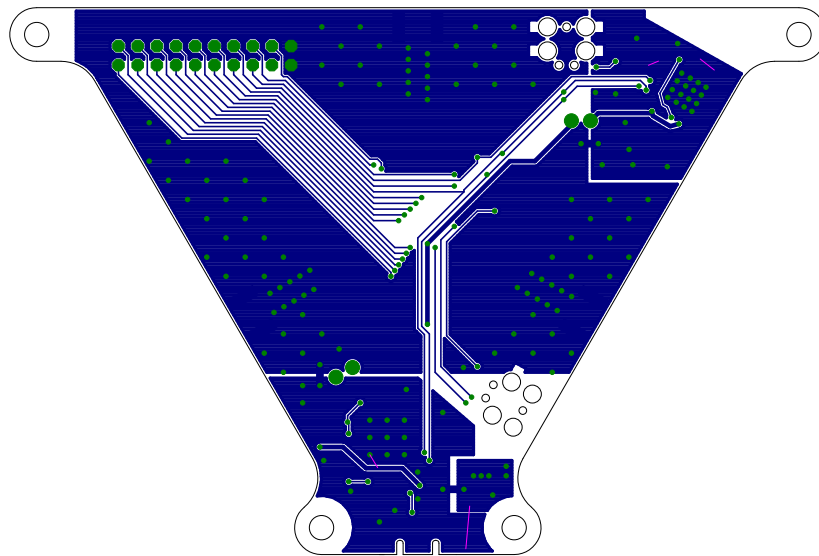
Top and Bottom Layers 1:1 Scale



Top Layer 1:1 Scale



Bottom Copper Layer 1:1 Scale



Sheet1

Qty	Value	Device
3	LINX-SMA-EDGE-0.062	LINX-SMA-EDGE-0.062
1	FRACTUS-2.4GHZ-FR05-S1-N-0-102	FRACTUS-2.4GHZ-FR05-S1-N-0-102
1	BAL-NRF01D3	BAL-NRF01D3
1	0.8pF	CAPACITOR
2	12pF	CAPACITOR
2	18pF	CAPACITOR
1	1nF	CAPACITOR
1	2.2nF	CAPACITOR
1	10nF	CAPACITOR
1	47nF	CAPACITOR
11	0.1uF	CAPACITOR
2	1uF	CAPACITOR
3	4.7uF	CAPACITOR
2	4.7uF	CAP_POL0603
1	GREEN	LED0603
2	BLUE	LED0603
1	RED	LED0603
1	MICRO_USB_B_HIROSE_ZX62R-B-5I	MICRO_USB_B_HIROSE_ZX62R-B-5I
1		PINHD-2X10
2		JUMPER-2PTH
1	15nH	INDUCTOR0402
1	10uH	INDUCTOR0603
3	FERRITE_BEAD	FERRITE_BEAD
4	1k	RESISTOR0402_RES
2	10k	RESISTOR0402_RES
1	12k 1%	RESISTOR0402_RES
1	TRIPOINT-BREAKOUT	TRIPOINT-BREAKOUT
1	NRF51822QF	NRF51822QF
1	MAX8887EZK33+T	MAX8887EZK33+T
1	FT232HQ	FT232HQ
1	16MHz	TXC-8Y
1	TXC-8Z-12MHZ	TXC-8Z-12MHZ

Sheet1

Package	Parts
CON SMA003.062	A1, A2, A3
FRACTUS-ANTENNA-FR05-S1-N-0-102	A4
BAL-NRF01D3	B1
0402_CAP	C1
0402_CAP	C2, C3
0402_CAP	C4, C5
0402_CAP	C6
0402_CAP	C7
0402_CAP	C8
0402_CAP	C9
0402_CAP	C10-C20
0402_CAP	C21, C22
0402_CAP	C23, C24, C25
CAP0603	C26, C27
LED-0603	D1
LED-0603	D2, D3
LED-0603	D4
USB_MICRO_B-HIROSE-ZX62R-B-5P	J1
2X10	J2
1X02	J3, J4
0402_CAP	L1
0603_CAP	L2
0603_CAP	L3, L4, L5
0402_RES	R1, R2, R3, R4
0402_RES	R5, R6
0402_RES	R7, R8
TRIPOINT-BREAKOUT	U1
QFN-48-6MM	U2
SOT-23-5	U3
QFN-48-8MM	U4
TXC-8Y	X1
TXC-8Z	X2

Sheet1

Description

CONN SMA JACK 50 OHM EDGE MNT

Fractus Compact Reach Xtend™ chip antenna is engineered specifically for Bluetooth, 50 ohm nominal input / conjugate match balun to nRF51422-QFAA,

0402 Capacitor

0402 Capacitor

0402 Capacitor

0402 Capacitor

0402 Capacitor

0402 Capacitor

0402 Capacitor

0402 Capacitor

0402 Capacitor

0402 Capacitor

0603 Capacitor

LEDs

LEDs

LEDs

USB Micro B Connector

PIN HEADER

Jumper

Resistor

Resistor

Resistor

UWB Ranging Module

Multiprotocol Bluetooth® 4.0 low energy/2.4 GHz RF SoC

IC REG LDO 3.3V 0.3A TSOT23-5

Single Channel USB to Multipurpose I/O IC

CRYSTAL 16MHZ 8PF SMD

Sheet1

DIGIKEY	MOUSER	NEWARK	RICHARDSON_RFPD
CONSMA003.062-ND			y
			FR05-S1-N-0102B
497-13637-1-ND	511-BAL-NRF01D3		y
490-6269-1-ND			y
490-6197-1-ND			y
490-6203-1-ND			y
490-1303-1-ND			y
490-5419-1-ND			y
445-1260-1-ND			y
445-1264-1-ND			y
490-1318-1-ND			y
445-4998-1-ND			y
445-5947-1-ND			y
478-8656-1-ND			y
160-1446-1-ND			y
160-1837-1-ND			y
160-1835-1-ND			y
H11574CT-ND	798-ZX62R-B-5P	69W0714	y
609-3365-ND			y
			y
587-1521-1-ND			y
490-4025-1-ND			y
445-2166-1-ND			y
RHM1.0KCECT-ND			y
RHM10.0KCDCT-ND			y
RHM12.0KCDCT-ND			y
			y
1490-1032-1-ND	949-NRF51822-QFAB-R7		y
MAX8887EZK33+TCT-ND			y
768-1102-1-ND	895-FT232HQ-REEL	65W8039	y
887-2003-1-ND			y
887-1487-1-ND			y