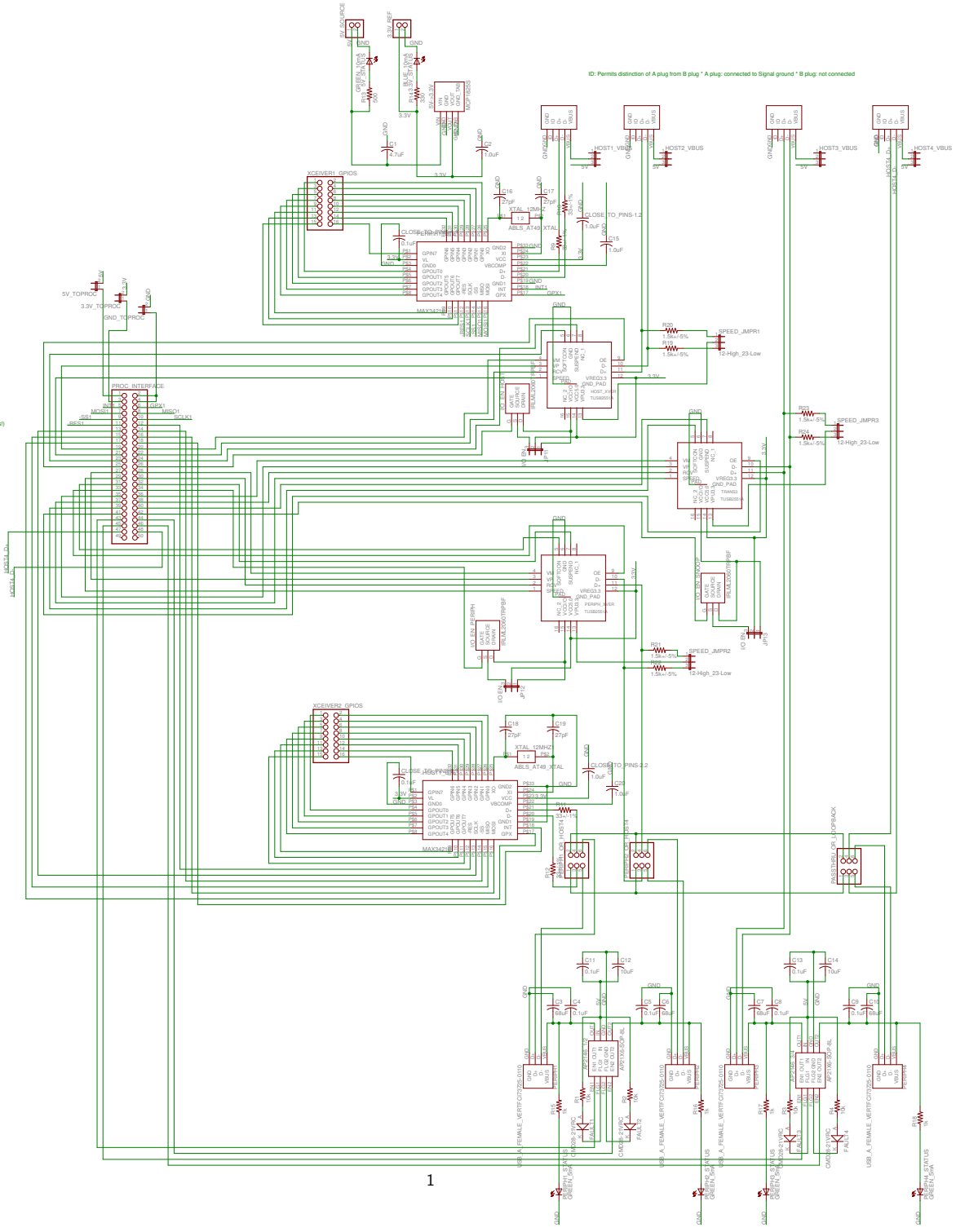
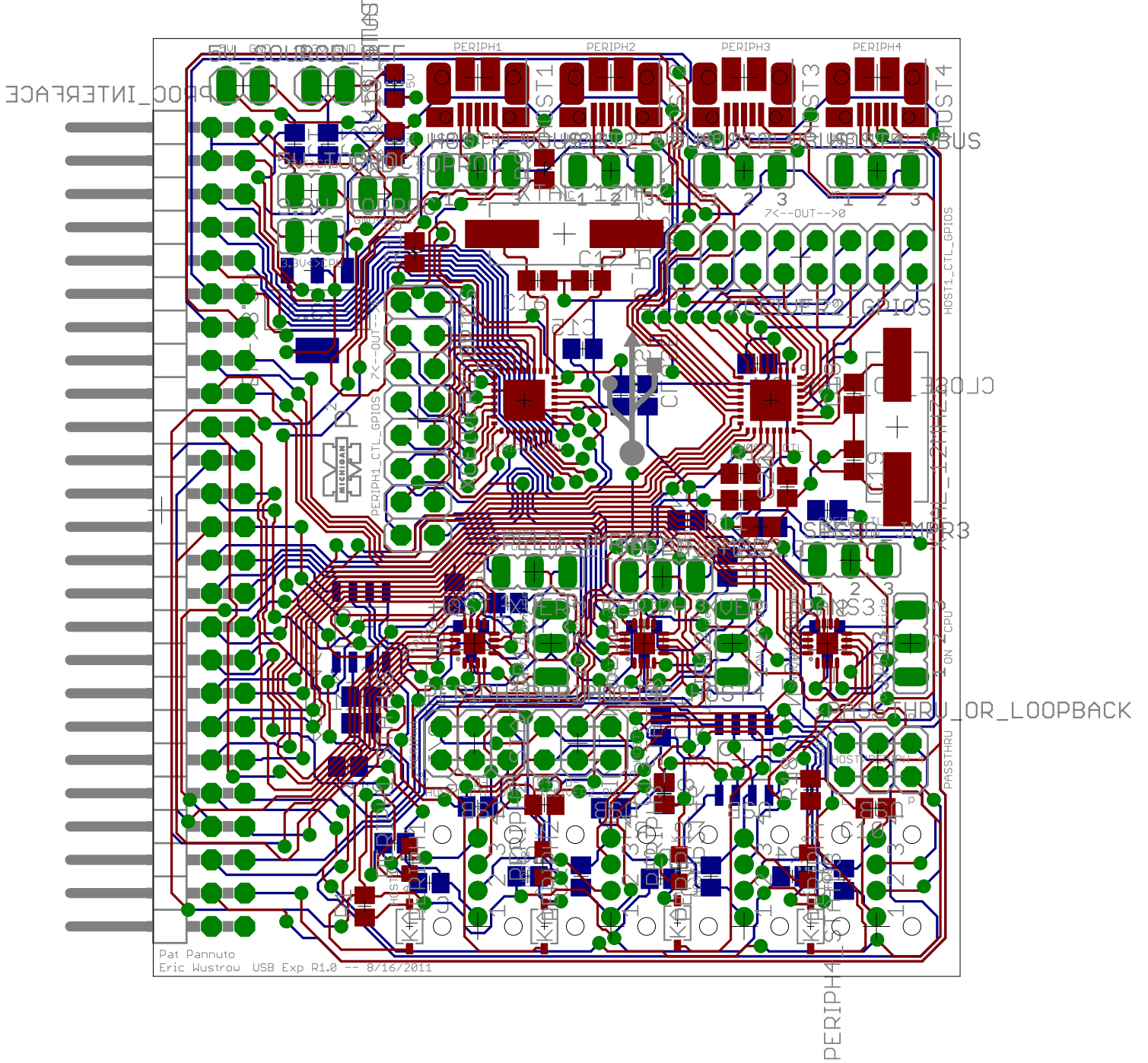


ID: Permis distinction of A plug from B plug \* A plug: connected to Signal ground \* B plug: not connected

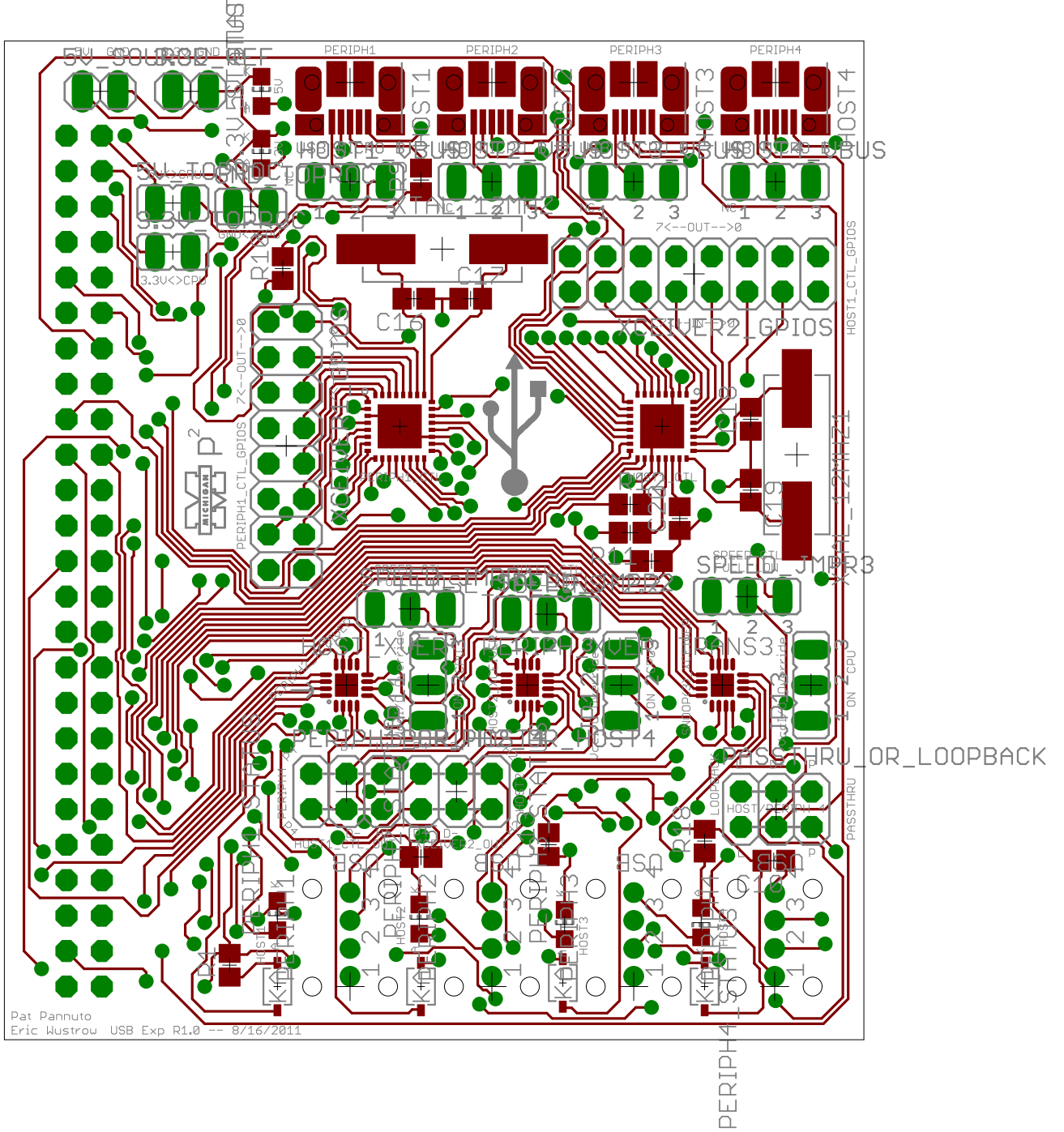
- 1 - 5V 2 - GND
- 3 - 3.3V 4 - GND
- 5-11 xceiver1 pins 18-12 (backwards)
- 12-18 xceiver2 pins 12-18
- TRANSCEIVER
- VP 6M
- SPEED RCV
- SOFTCON SUSPEN
- OE IO\_EN
- 43-46 Periph Port OnOff
- 47-50 NC (future)



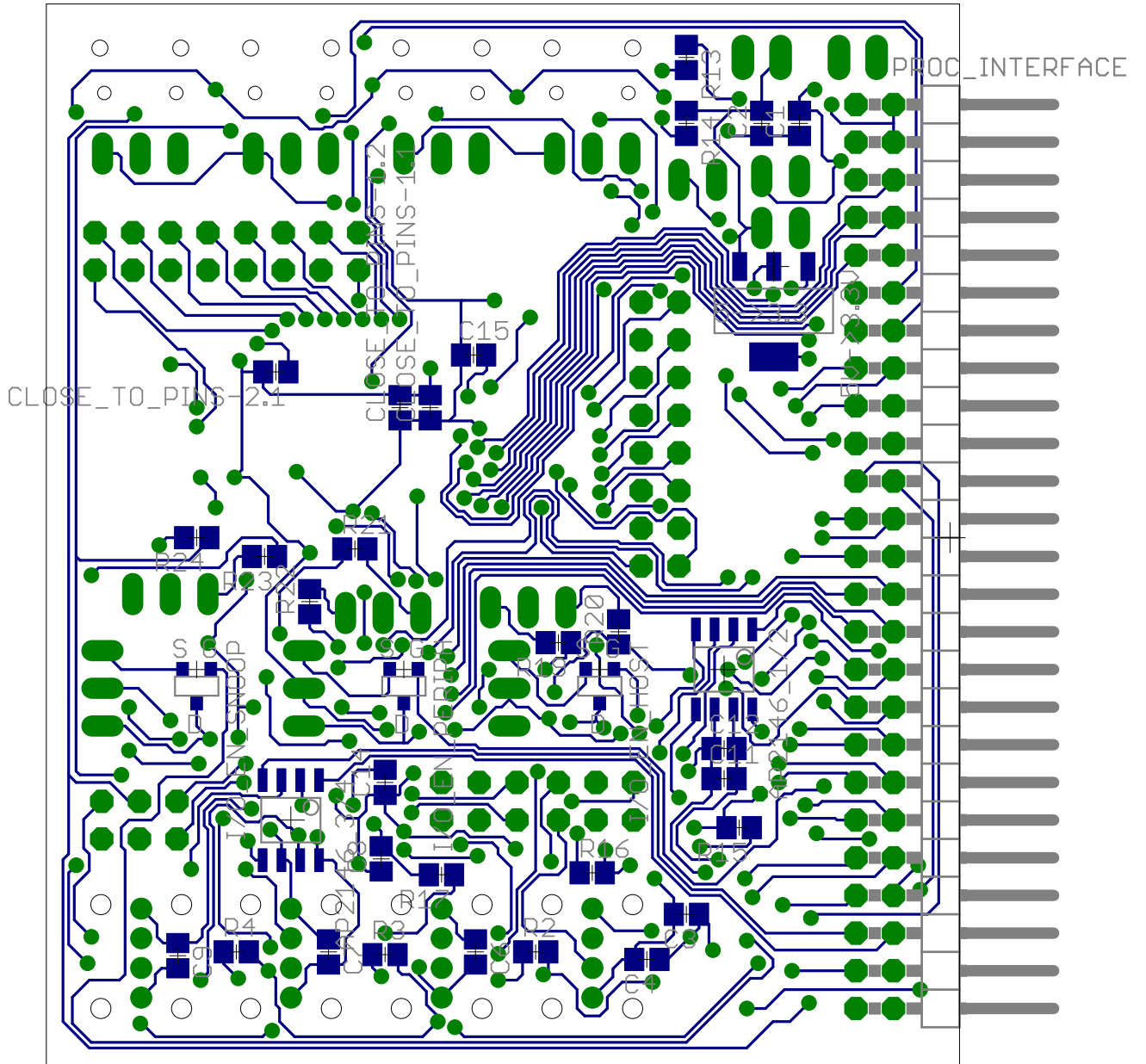
# FIXED 3.3V LED BUG FROM REV1.0



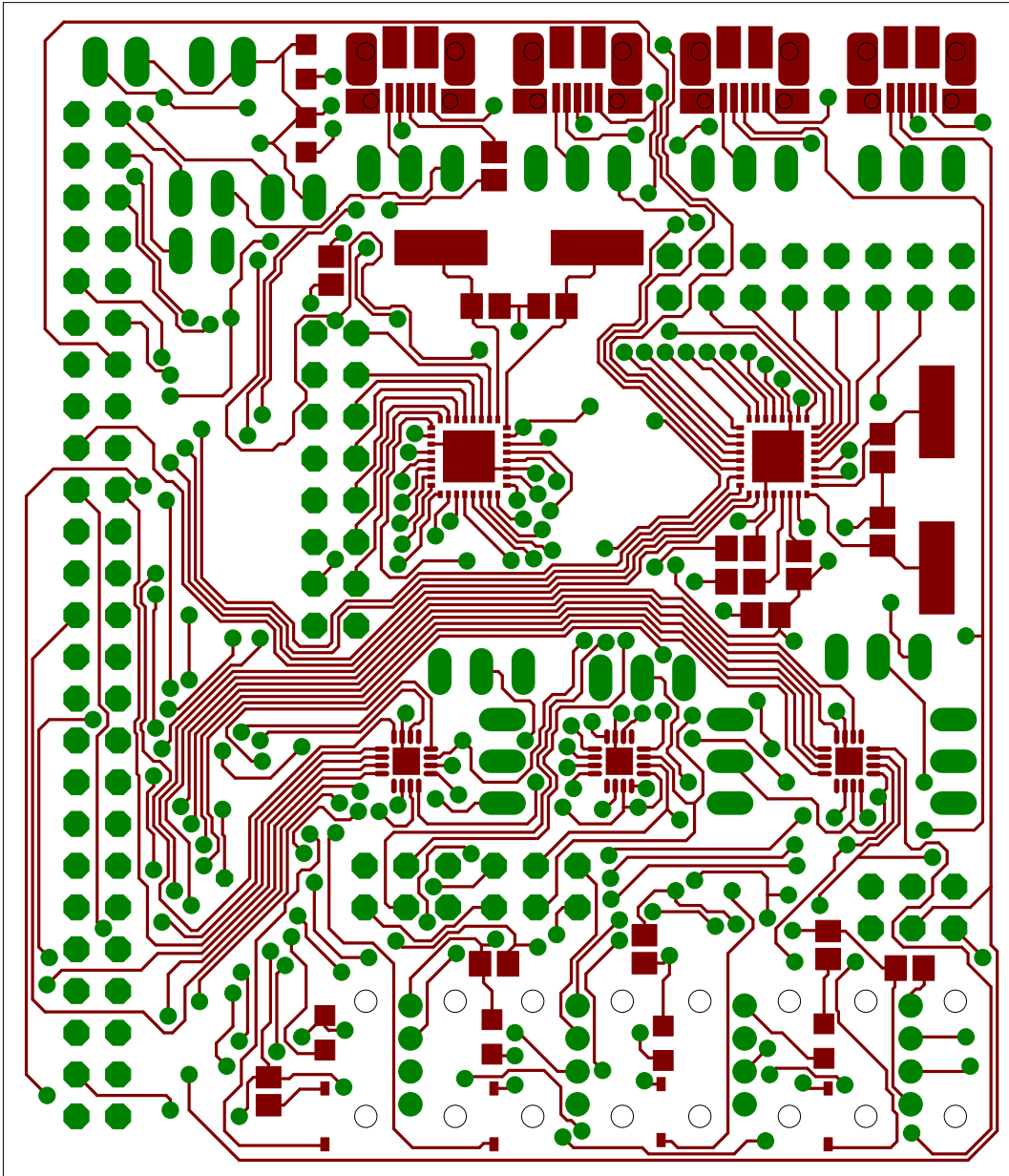
# FIXED 3.3V LED BUG FROM REV1.0



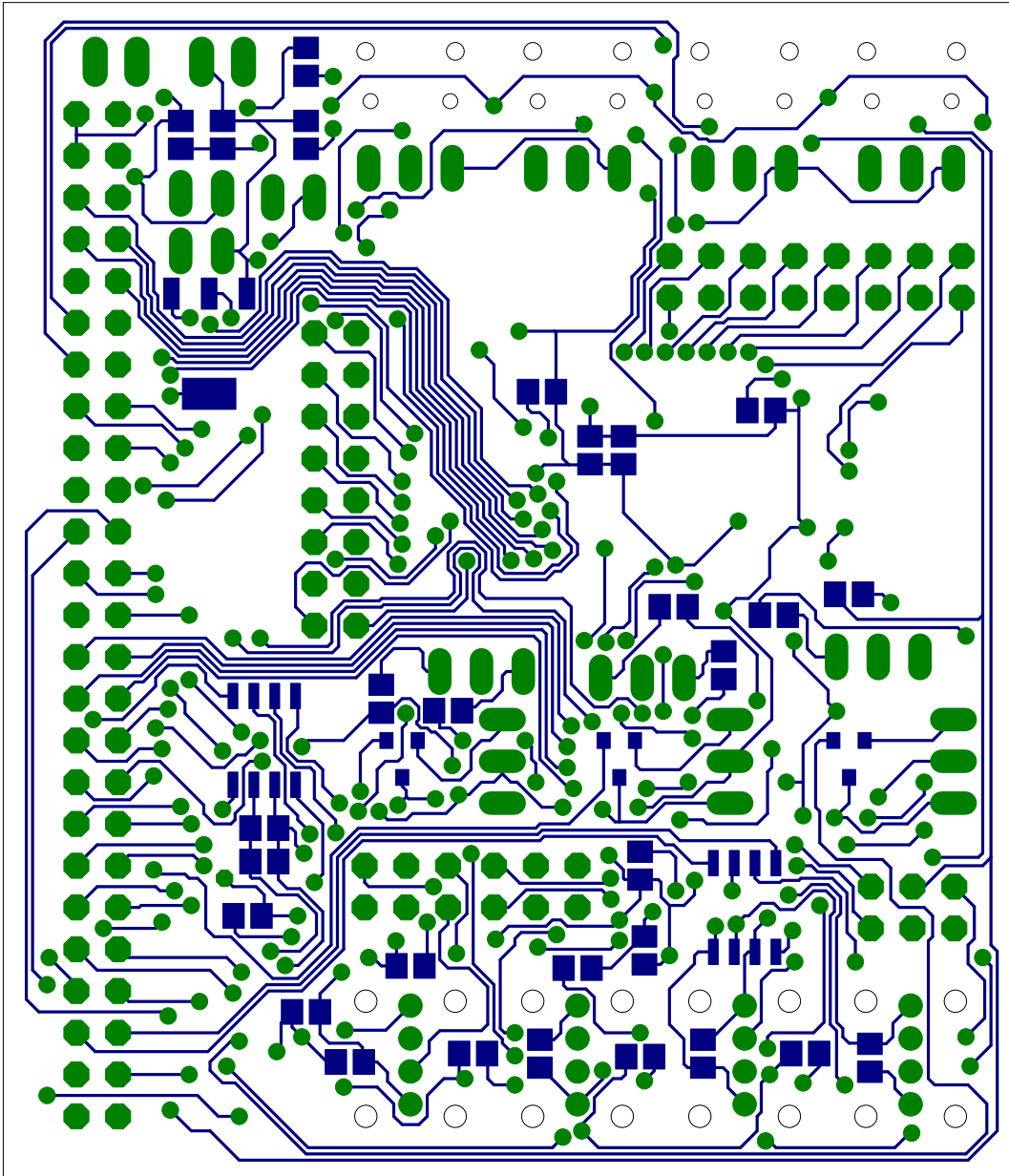
Bottom Layer



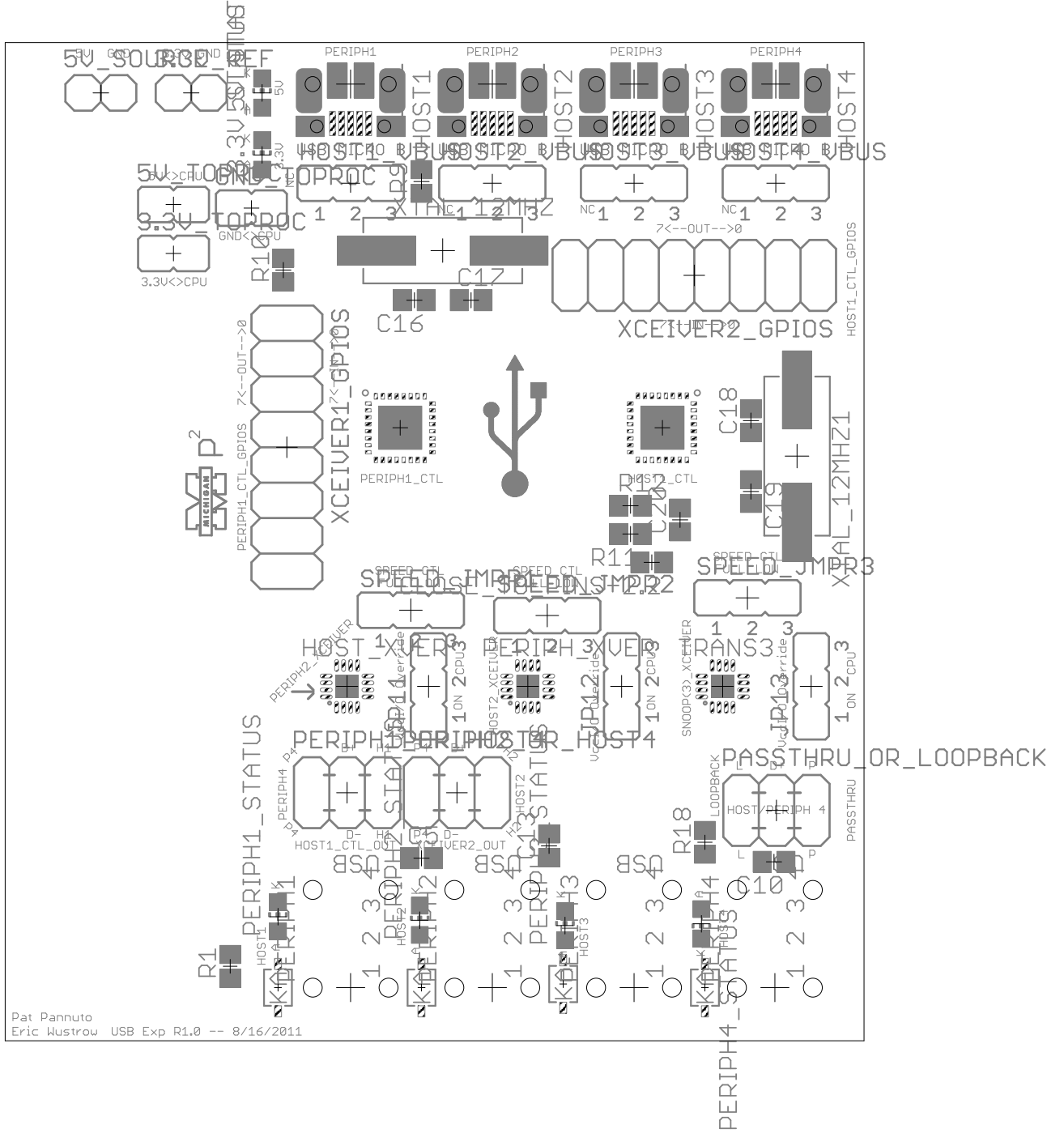
Top Copper Layer



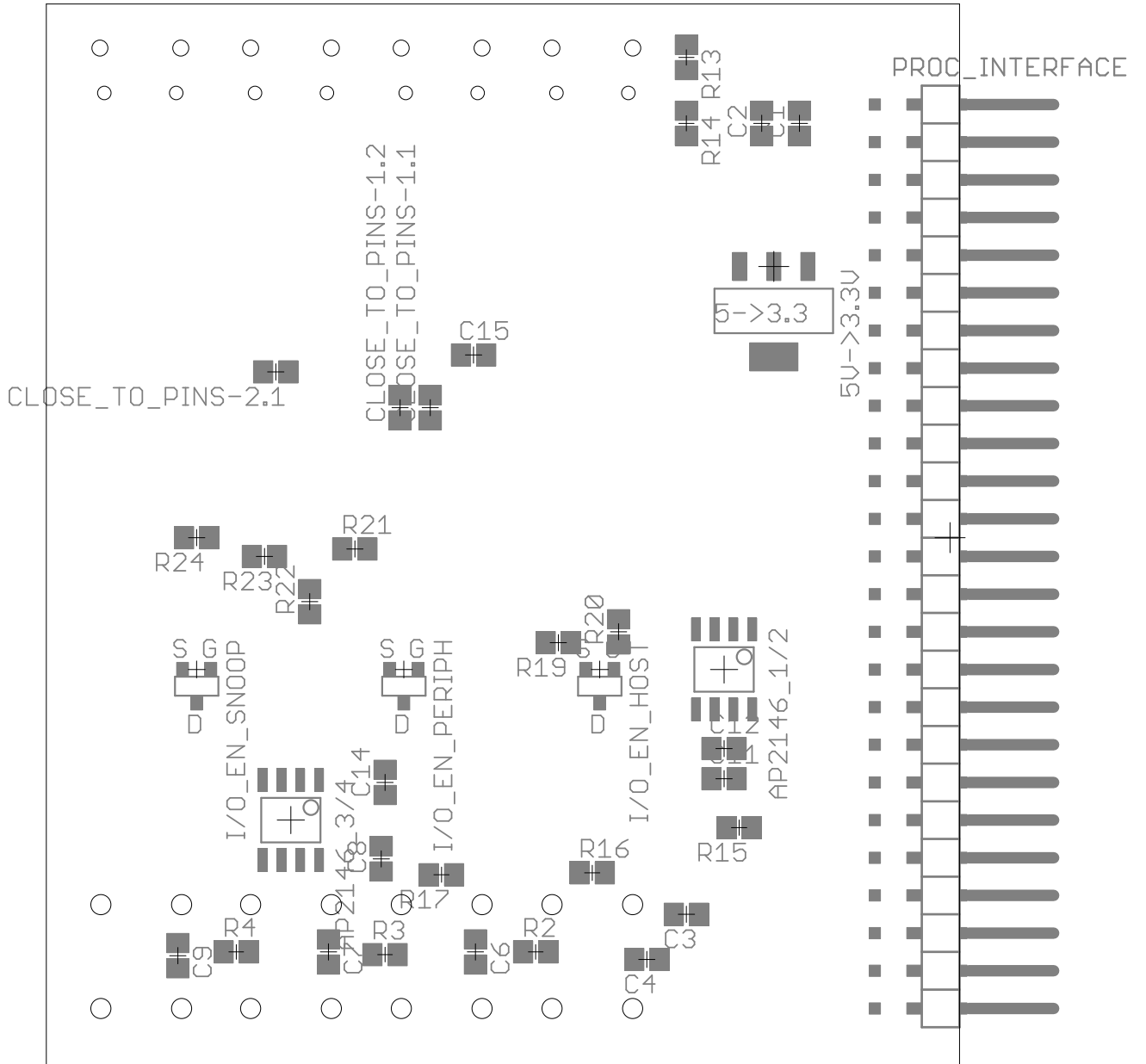
Bottom Copper Layer



# FIXED 3.3V LED BUG FROM REV1.0



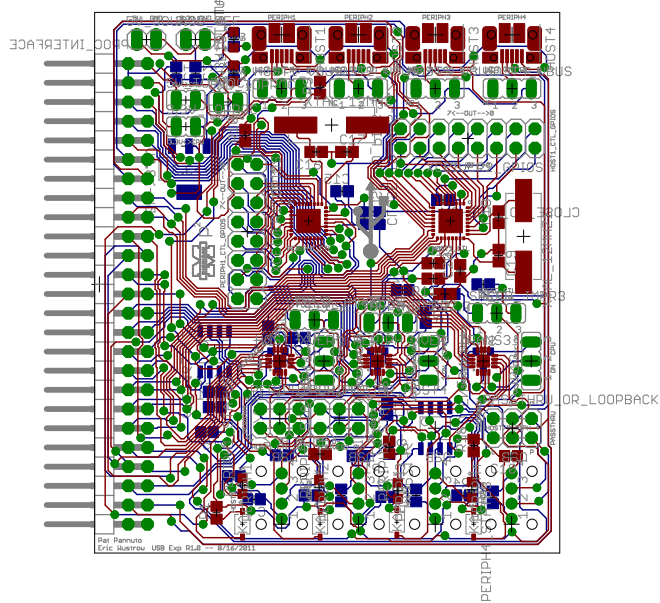
Bottom Paste Layer with Silkscreen



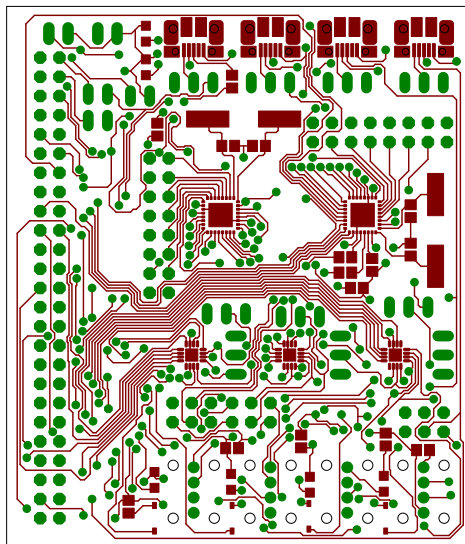


Top and Bottom Layers 1:1 Scale

FIXED 3.3V LED BUG FROM REV1.0



Top Layer 1:1 Scale



Bottom Copper Layer 1:1 Scale

